

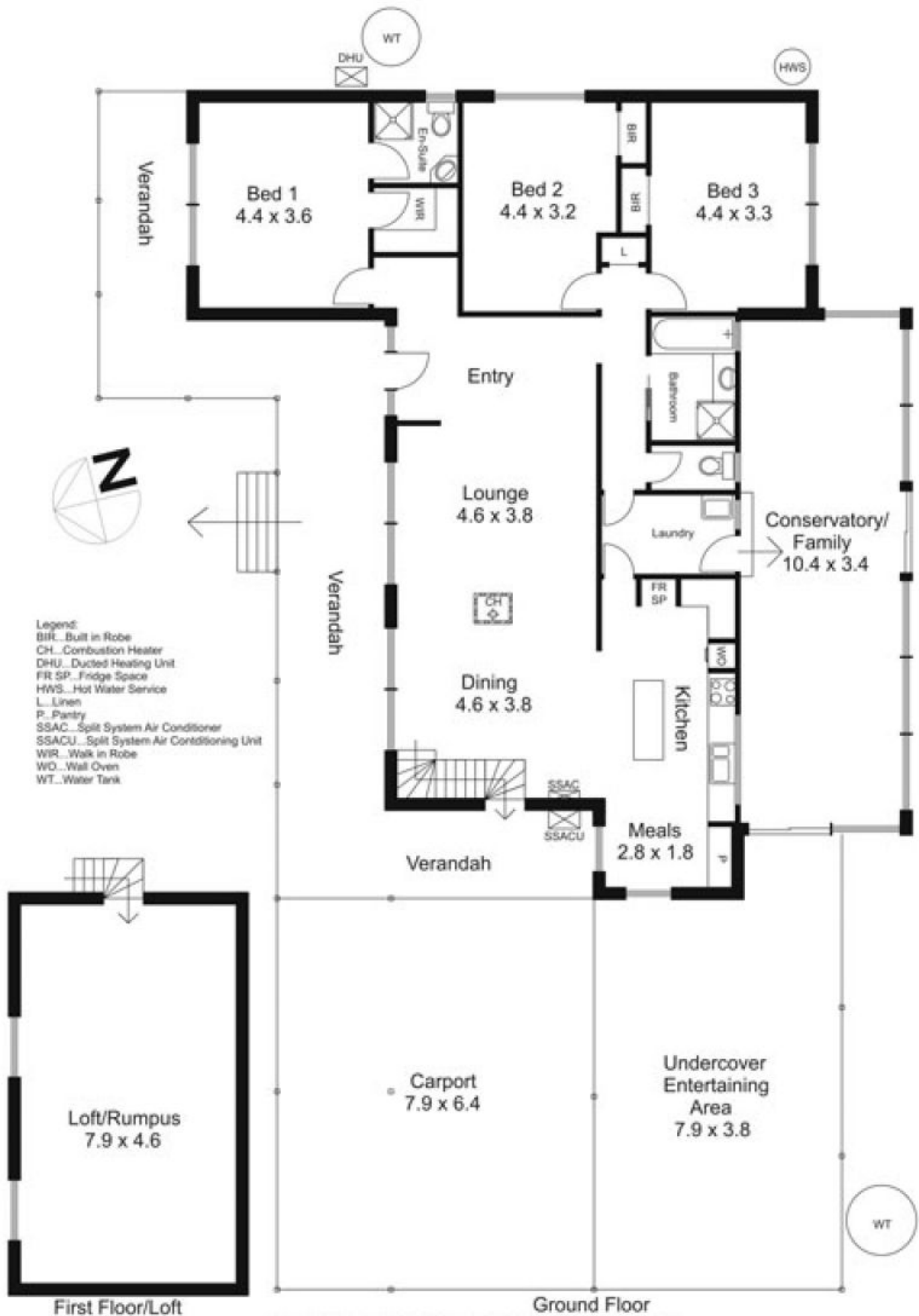


66 Sheedy Road GISBORNE VIC

3 2 2

Maintained to perfection. House comprises three generous sized bedrooms, ensuite, formal lounge, attic style rumpus room and enormous sunroom. Reverse cycle air conditioner, gas central heating. Outside entertaining area, double carport. All this in a beautiful garden setting.

Type : House
Building Size : 20 sqm
Land Size : 1492 sqm
View : <https://www.kennedyandhunt.com.au/sale/vic/macedon-ranges/gisborne/residential/house/5848741>



Drawing for illustration purposes only. Not drawn to scale. All measurements are approximate only.