

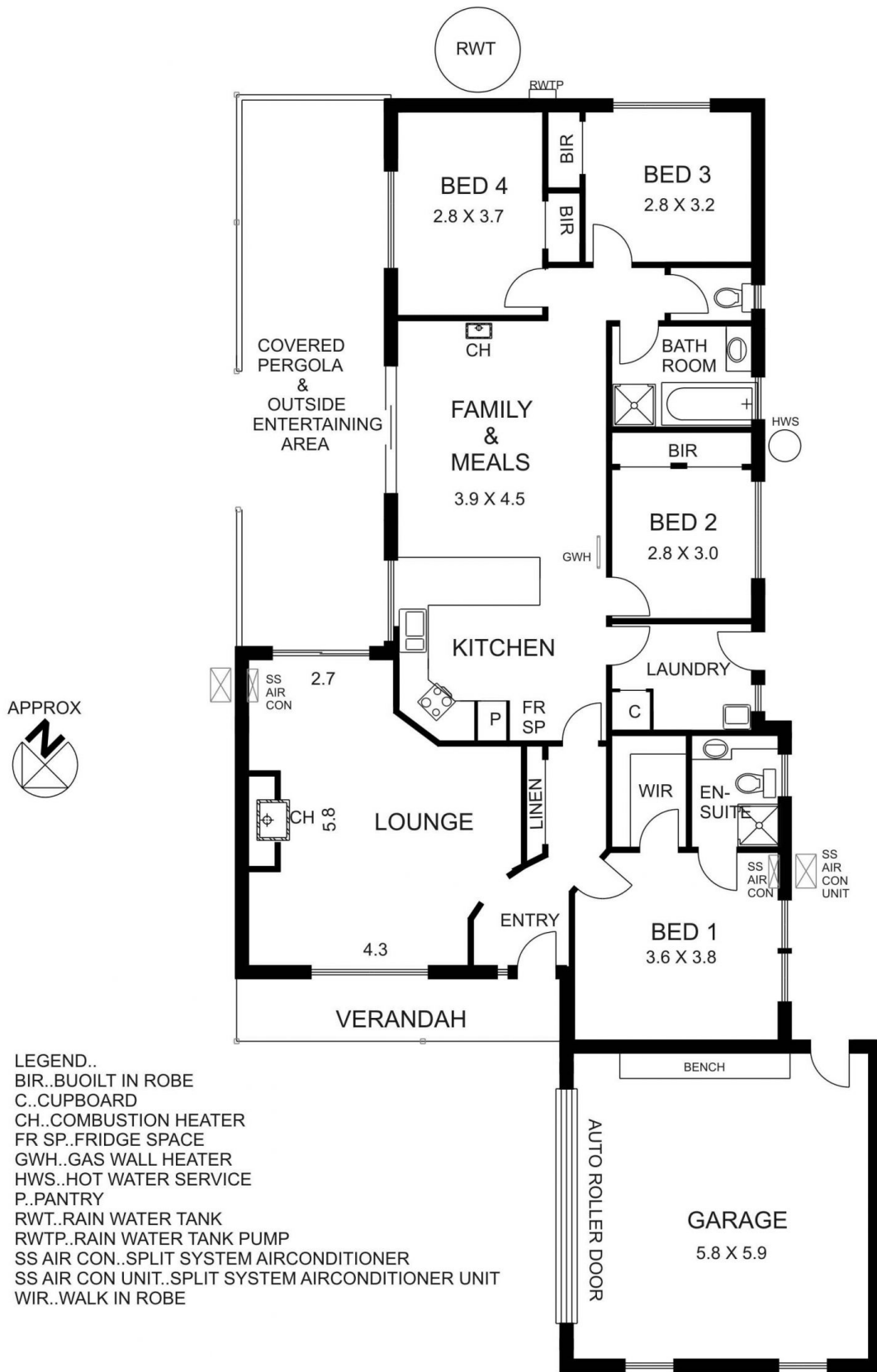


**5 Sunnypark Close GISBORNE VIC**

4 2 2

Well appointed four bedroom brick veneer home offering cosy lounge with character, light kitchen/meals area, ensuite, main bathroom & double integrated garage. Established, manageable garden, beautifully private undercover outdoor area. On the edge of town and within minutes to all facilities and connection to freeway. A perfect package for first home buyers, down sizers or even investors.

**Type** : House  
**Building Size** : 17 sqm  
**Land Size** : 665 sqm  
**View** : <https://www.kennedyandhunt.com.au/sale/vic/macedon-ranges/gisborne/residential/house/5848754>



- LEGEND..
- BIR..BUOILT IN ROBE
  - C..CUPBOARD
  - CH..COMBUSTION HEATER
  - FR SP..FRIDGE SPACE
  - GWH..GAS WALL HEATER
  - HWS..HOT WATER SERVICE
  - P..PANTRY
  - RWT..RAIN WATER TANK
  - RWTP..RAIN WATER TANK PUMP
  - SS AIR CON..SPLIT SYSTEM AIRCONDITIONER
  - SS AIR CON UNIT..SPLIT SYSTEM AIRCONDITIONER UNIT
  - WIR..WALK IN ROBE

DRAWING IS FOR ILLUSTRATION PURPOSES ONLY. NOT DRAWN TO SCALE. ALL MEASUREMENTS ARE APPROXIMATE ONLY.