



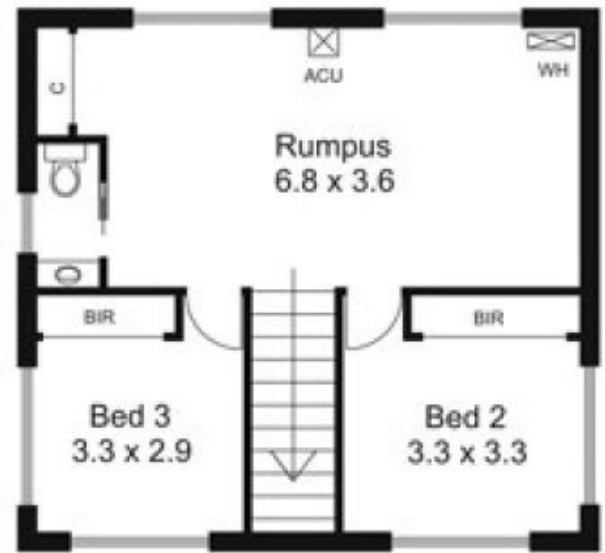
163 Walsh Road BULLENGAROOK VIC

3 2 2

Home Plus Improvements on Land 8ha approx. (20 acres)

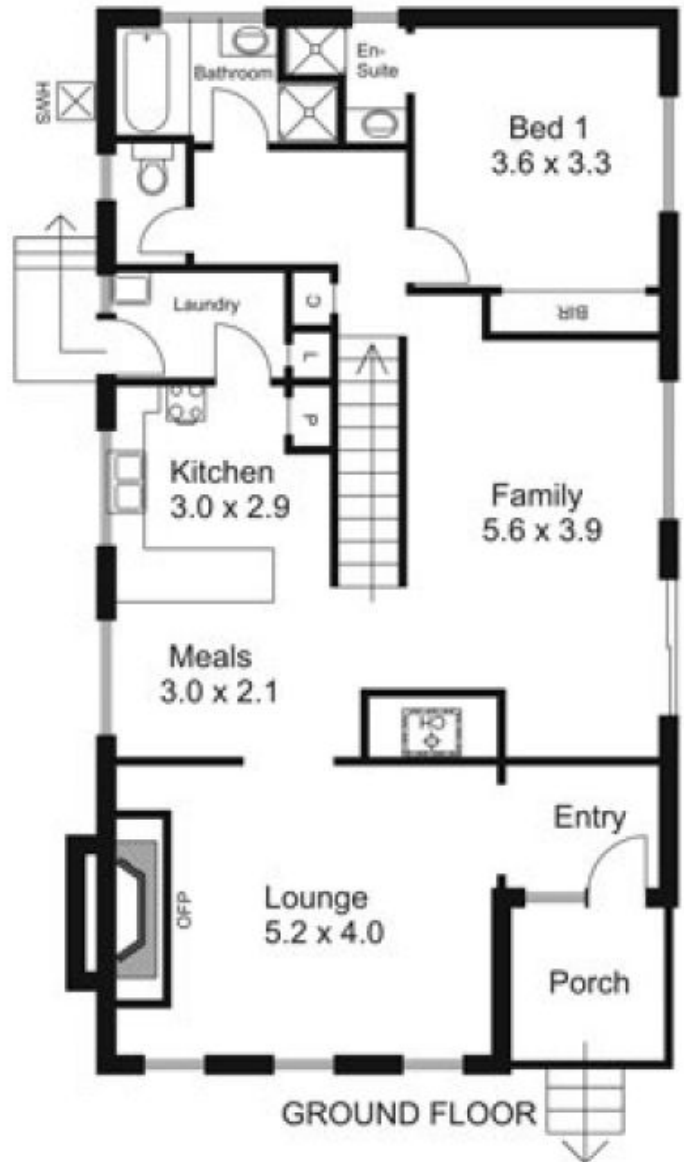
2 storey residence looking for TLC offers 3 living areas, 3 bedrooms, open fire place & slow combustion heater. Hardwood floor boards, double garage, views over property & forest. Several paddocks, loose boxes, stock yards, cleared & timbered country. Adjoins Lerderderg State Park Pyrete Range.

Type : Acreage/Semi-Rural
Building Size : 18 sqm
Land Size : 80000 sqm
View : <https://www.kennedyandhunt.com.au/sale/vic/macedon-ranges/bullengarook/residential/acreagesemirural/5848765>

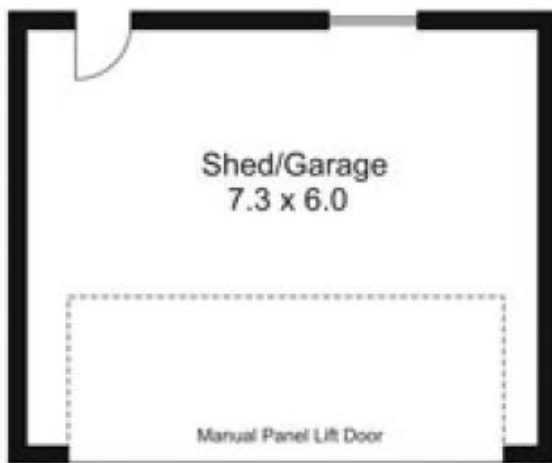


FIRST FLOOR

- Legend:
 ACU...Air Conditioning Unit
 BIR...Built in Robe
 C...Cupboard
 CH...Combustion Heater
 HWS...Hot Water Service
 L...Linen
 OFFP...Open Fire Place
 P...Pantry
 WH...Wall Heater



GROUND FLOOR



Note: Shed/Garage may not be in actual position to house