

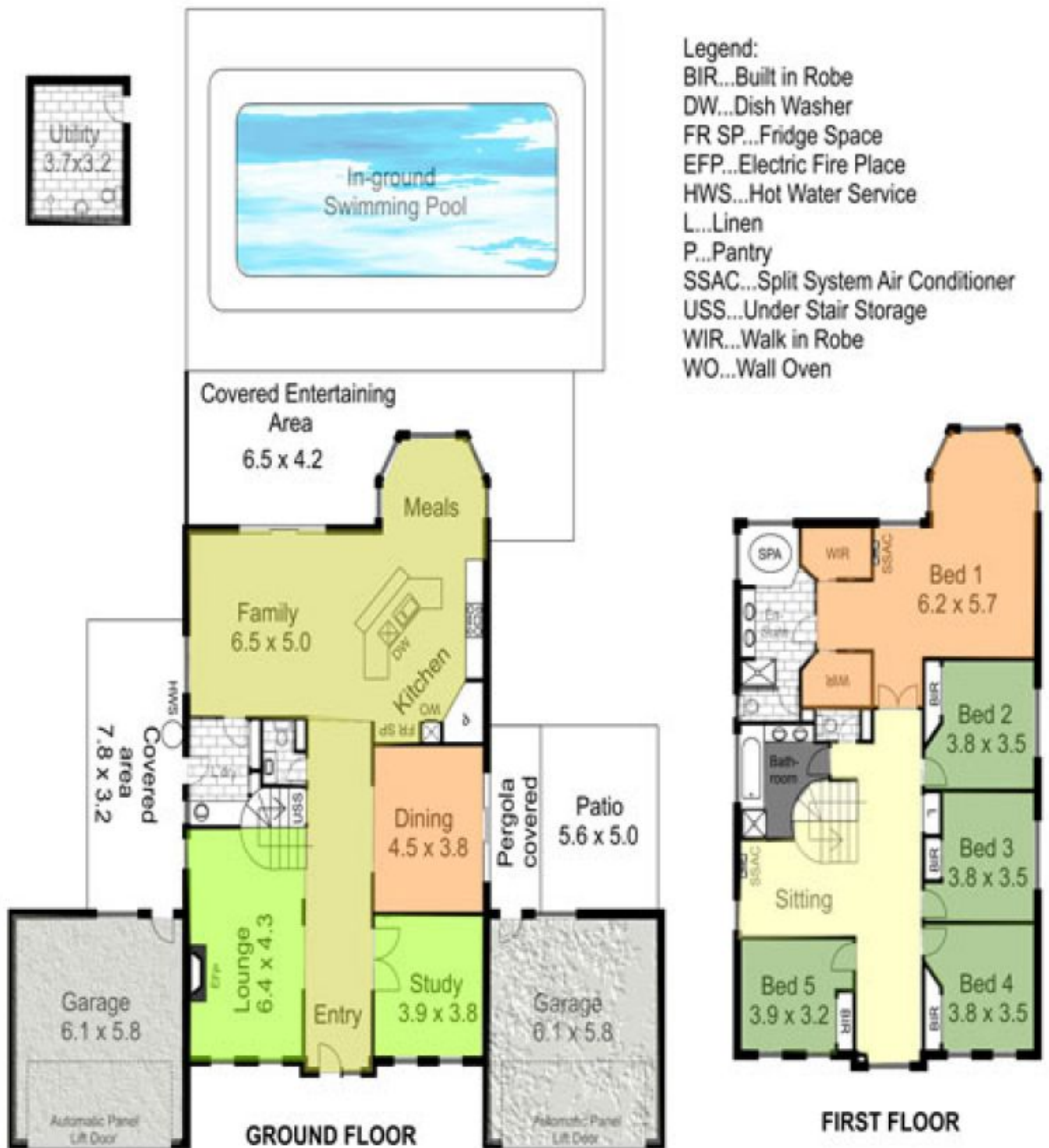


**25 Chessy Park Drive NEW GISBORNE VIC**

5 🏠 3 🚗 4 🚘

Move in and begin enjoying life in this beautifully presented property. Outdoor entertaining areas, sparkling, solar heated inground swimming pool, generous accommodation on two levels. Upstairs has exceptional views to Macedon Ranges. Spaces offered are formal living and dining, large casual family living/meals/ kitchen, study rooms/areas, bathroom, powder room, ensuite and much more. Garages on both sides of the home and easy vehicle access to the rear of the block. Water tanks, outdoor change room, veggie gardens and more. Lots to love in a popular location close to schools, train station and easy link to freeway. Inspection by appointment or at open for inspection times.

**Type** : House  
**Building Size** : 32 sqm  
**Land Size** : 2000 sqm  
**View** : <https://www.kennedyandhunt.com.au/sale/vic/macedon-ranges/new-gisborne/residential/house/5848791>



Drawing for illustration purposes only. Not drawn to scale. All measurements are approximate only.