



15 Dalray Crescent NEW GISBORNE VIC

4 3 2

Features bright and airy north facing family area overlooking private landscaped gardens and opening to superb pergola/ alfresco area. Other accommodation includes private lounge, well appointed kitchen, 4 bedrooms (full ensuite) and large study. Gas ducted heating/ air conditioning, 2.7m ceilings, water tanks and car access to rear yard. Inspection will not disappoint. Convenient to station and primary schools. Simply move in and put your feet up

Type : House
Land Size : 1298 sqm
View : <https://www.kennedyandhunt.com.au/sale/vic/macedon-ranges/new-gisborne/residential/house/5848936>

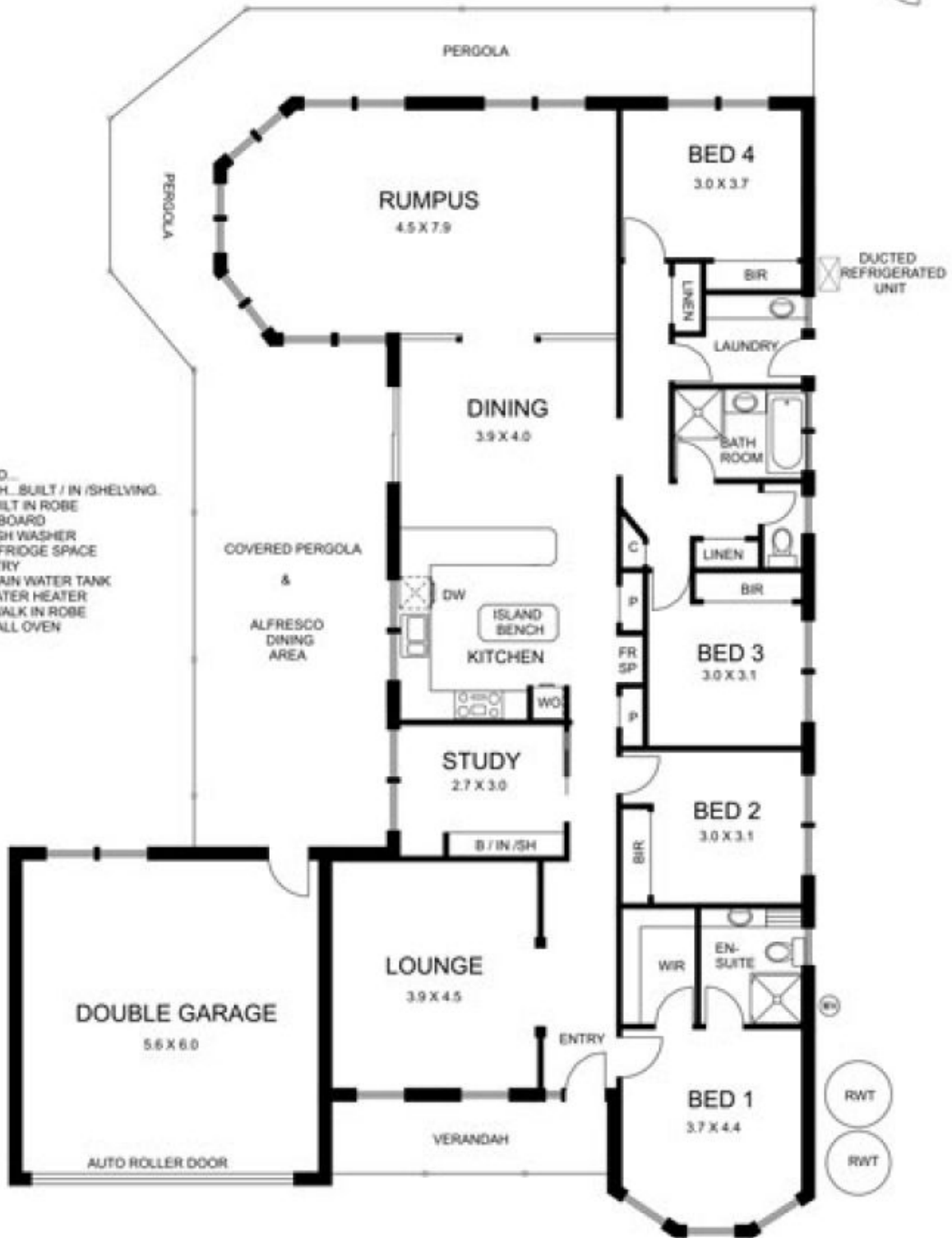
Property Code: 555



Jason Kennedy
03 5428 2544



LEGEND...
 B / IN / SH... BUILT / IN / SHELVING.
 BIR... BUILT IN ROBE
 C... CUPBOARD
 DW... DISH WASHER
 FR. SP... FRIDGE SPACE
 P... PANTRY
 RWT... RAIN WATER TANK
 WH... WATER HEATER
 WIR... WALK IN ROBE
 WO... WALL OVEN



DRAWING IS FOR ILLUSTRATION PURPOSES ONLY. NOT DRAWN TO SCALE. ALL MEASUREMENTS ARE APPROXIMATE ONLY.