

81-85 Sheedy Road GISBORNE VIC

4 2 3

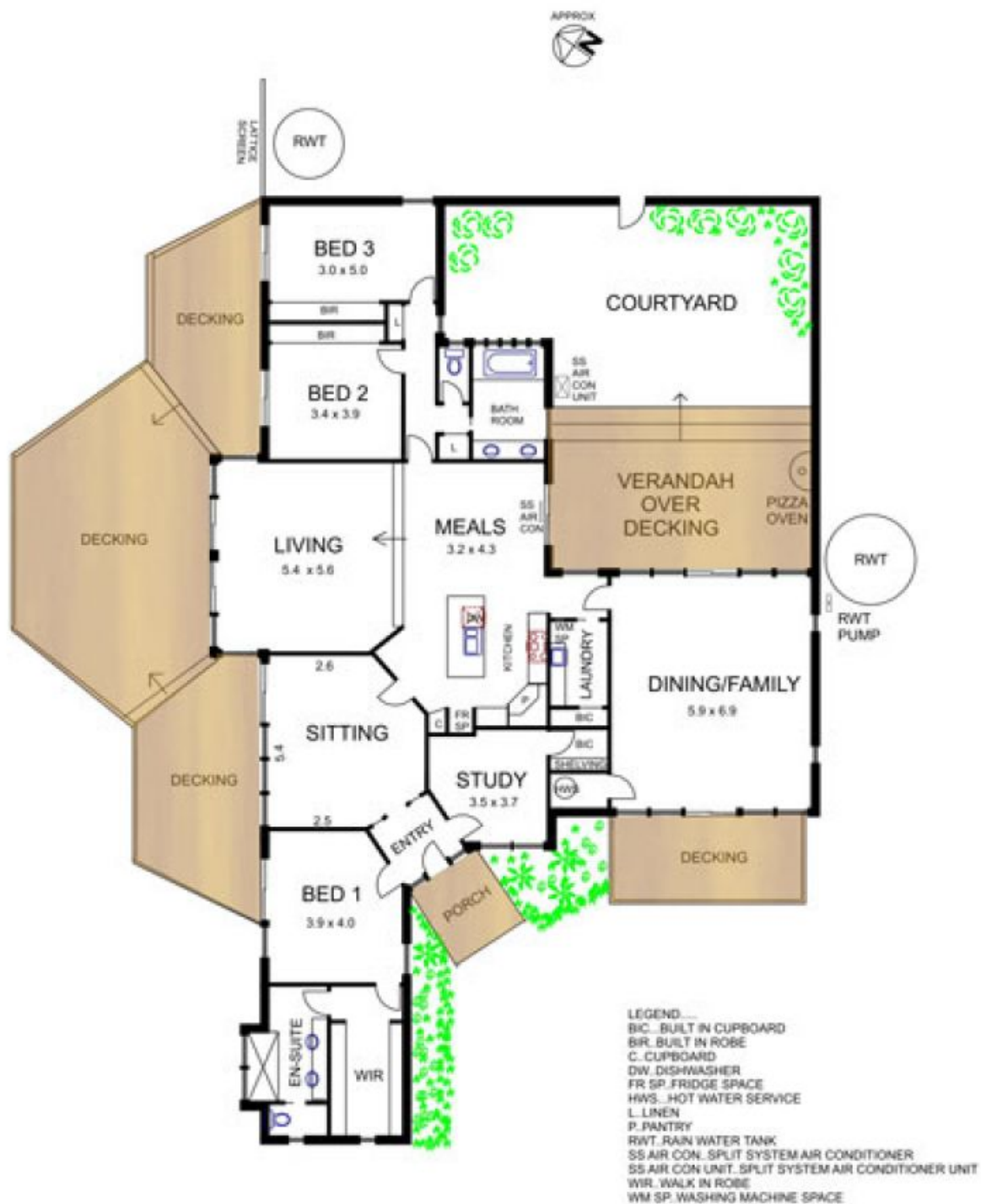
Features magnificent valley views to Mount Macedon and superb mature gardens. Quality throughout with 3 living areas opening to decks, 3-4 bedrooms, full ensuite and chef's kitchen with granite benchtops. Includes spotted gum floor boards, natural gas central heating, vegetable garden, green house and triple garage. Privacy and convenience to town centre. Fast freeway access to City - 45 minutes approx. Airport - 25 minutes approx. A masterpiece.

Property Code: 576

Land Size : 4036 sqm
View : <https://www.kennedyandhunt.com.au/sale/vic/macedon-ranges/gisborne/residential/house/5848944>



Jason Kennedy
03 5428 2544



DRAWING IS FOR ILLUSTRATION PURPOSES ONLY. NOT DRAWN TO SCALE. ALL MEASUREMENTS ARE APPROXIMATE ONLY.