



**12 Pinelea Grove GISBORNE VIC**

4 2 2

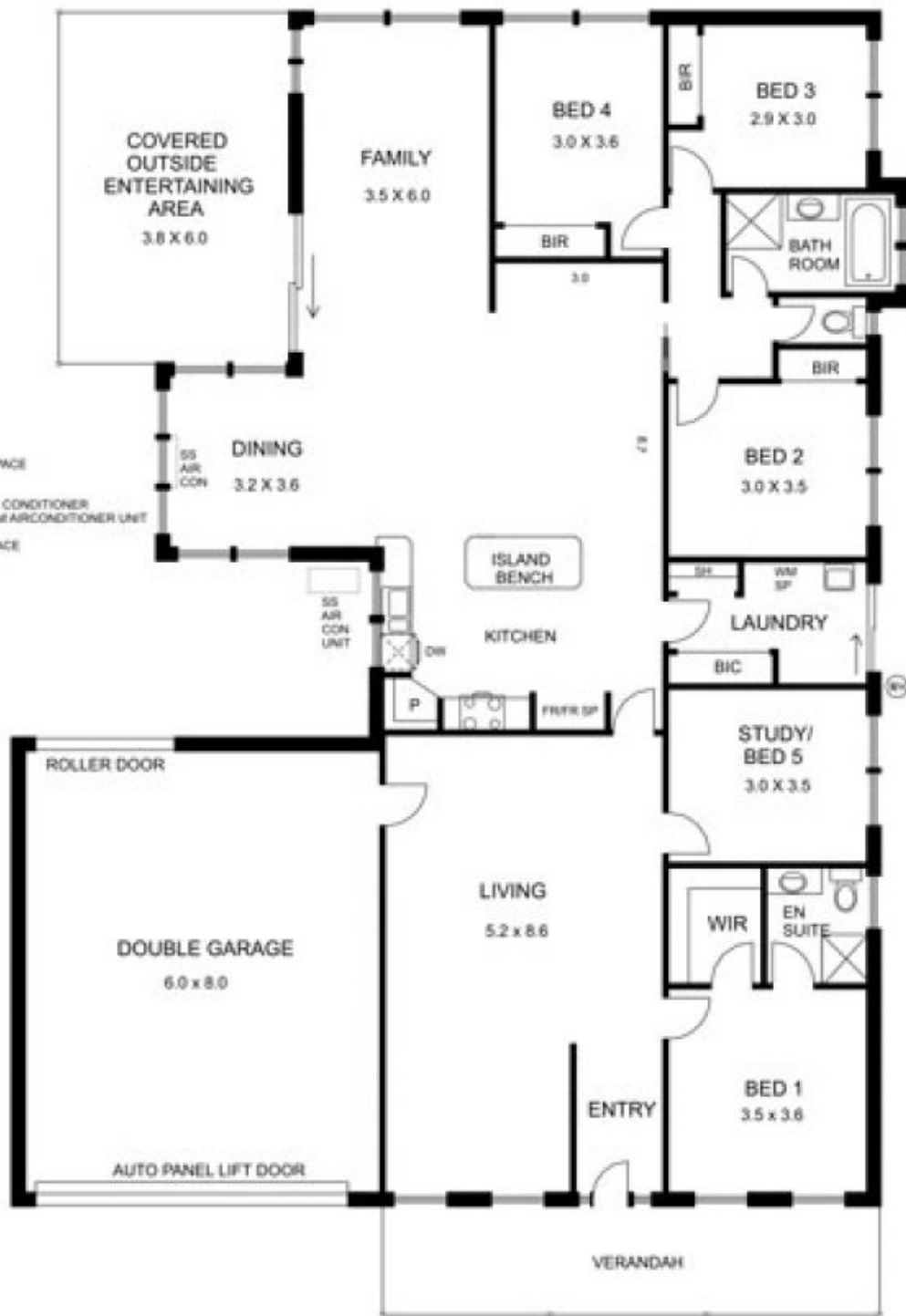
Generous family accommodation with notes of character inside and out. Two spacious living areas, 4 good sized bedrooms, study (or 5th bedroom), ensuite, family bathroom, laundry and undercover al fresco area. Double integrated garage and garden shed. Brass light switches, period style light fittings, 2.7m ceilings all add to the ambience. Life in this little pocket of Gisborne could be just what you are looking for!

**Type** : House  
**Land Size** : 1005 sqm  
**View** : <https://www.kennedyandhunt.com.au/sale/vic/macedon-ranges/gisborne/residential/house/5848951>

Property Code: 595



**Jason Kennedy**  
03 5428 2544



- LEGEND
- BIC BUILT IN CUPBOARD
  - BIR BUILT IN ROBE
  - DW DISHWASHER
  - FR FRIDGE FREEZER SPACE
  - P PANTRY
  - SH SHELVING
  - SS AIR CON SPLIT SYSTEM AIR CONDITIONER
  - SS AIR CON UNIT SPLIT SYSTEM AIRCONDITIONER UNIT
  - WH WATER HEATER
  - WM SP WASHING MACHINE SPACE



DRAWING IS FOR ILLUSTRATION PURPOSES ONLY NOT DRAWN TO SCALE. ALL MEASUREMENTS ARE APPROXIMATE ONLY.