

**8 Coop Drive GISBORNE VIC**

3 3 2

Ready to move in to and enjoy. Located in Coop Drive, off Brooking Road. This property offers three well proportioned bedrooms, two smart contemporary bathrooms, enormous laundry, study/4th bedroom and large, light and bright north facing living/dining/kitchen (with walk in pantry). Features include high ceilings & doors, double glazing, evaporative cooling, extensive speaker and Ethernet cabling, dishwasher, fabulous decking across the rear of the home and more. Fully integrated double garage is another bonus. A garden shed and irrigation system complete the landscaping. Better than new in so many ways.

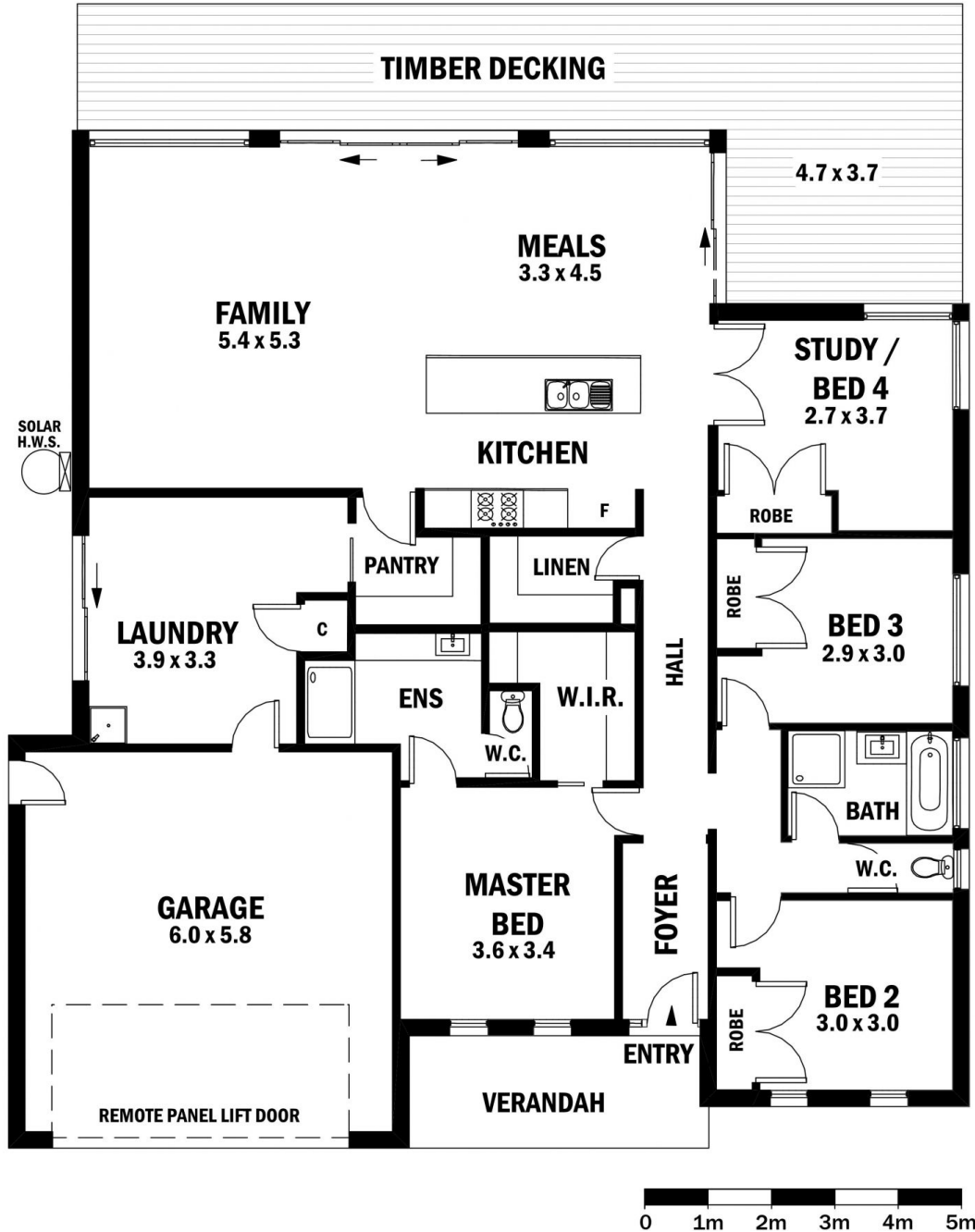
**Type** : House  
**Land Size** : 700 sqm  
**View** : <https://www.kennedyandhunt.com.au/sale/vic/macedon-ranges/gisborne/residential/house/5848956>

Property Code: 602



**Jason Kennedy**  
03 5428 2544

# 8 COOP DRIVE GISBORNE



AWING IS FOR ILLUSTRATION PURPOSES ONLY. NOT DRAWN TO SCALE. ALL MEASUREMENTS ARE APPROXIMATE ON NEITHER THE VENDOR OR THE AGENT ARE RESPONSIBLE FOR ANY ERRORS OR OMISSIONS. IT IS UP TO THE PURCHASERS TO VERIFY ALL INFORMATION.