

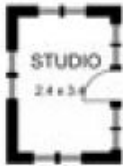


48 Cherry Lane GISBORNE VIC

3 2 2

Just add your touch and enjoy a residence with room for everyone. Home comprises 3 bedrooms, study, ensuite, walk-in and built-in robes, lounge/dining room plus family and rumpus room. Large kitchen, laundry and main bathroom. Reverse cycle air conditioners, gas log heater and vacuum system. Integrated double garage, integrated double carport and detached studio.

Type : House
Building Size : 25 sqm
Land Size : 2006 sqm
View : <https://www.kennedyandhunt.com.au/sale/vic/macedon-ranges/gisborne/residential/house/5849044>



Drawing is for illustration purposes only. Not drawn to scale. All measurements are approximate only.