

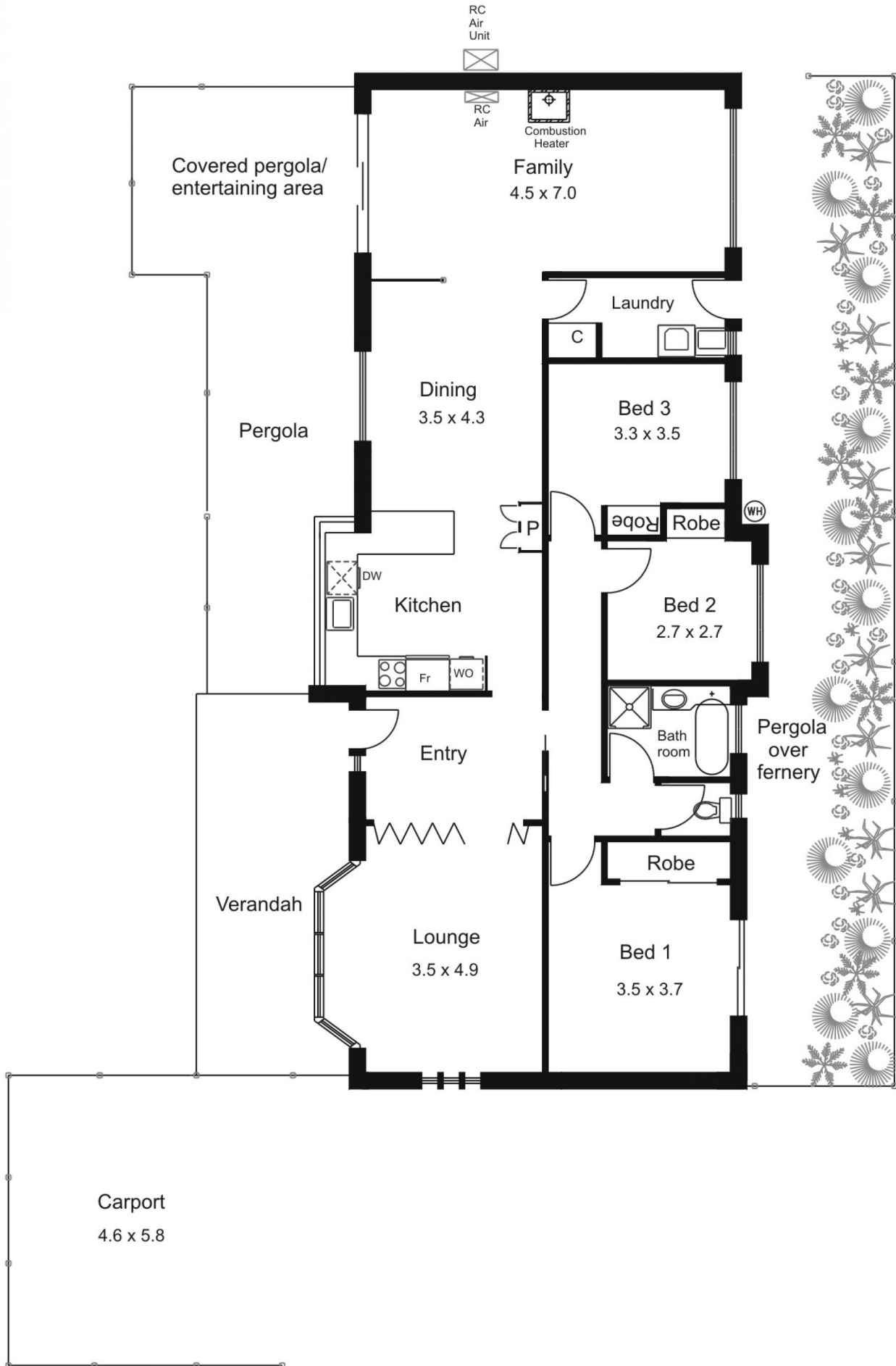


18 Mountain View Way GISBORNE VIC

3 1 2

A little gem offering three bedrooms, two large and separate living areas, kitchen/meals, bathroom and laundry. Undercover outdoor entertaining space and generous double carport. Updated window furnishings, screens and carpets. Natural gas central heating, split system heating/cooling and slow combustion fire. Extensive paving. Private end of court position opposite parkland. Just move in and enjoy.

Type : House
Land Size : 657 sqm
View : <https://www.kennedyandhunt.com.au/sale/vic/macedon-ranges/gisborne/residential/house/5849047>



Drawing is for illustration purposes only.
 All measurements are approximate only. Not drawn to scale.