



14 Chessy Park Drive NEW GISBORNE VIC

4 2 4

No one misses out with this property! Beautifully presented home offers 4 bedrooms, study, two spacious living areas, large kitchen/dining space, modern ensuite and family bathroom. Fittings include timber floors, quality carpets, all Miele appliances (including dual ovens), split system heating/cooling, ducted vacuum system and much more. Undercover outdoor entertaining, solar heated swimming pool, paved utility area, garden shedding, raised vegetable gardens, separate colourbond workshop/garage, integrated double garage and double carport. High quality fixtures and fittings throughout. Walk to train station, primary schools, recreation reserve and quick, easy link to Calder Freeway. The whole family will love living here.

Type : House
Land Size : 2000 sqm
View : <https://www.kennedyandhunt.com.au/sale/vic/macedon-ranges/new-gisborne/residential/house/5849052>

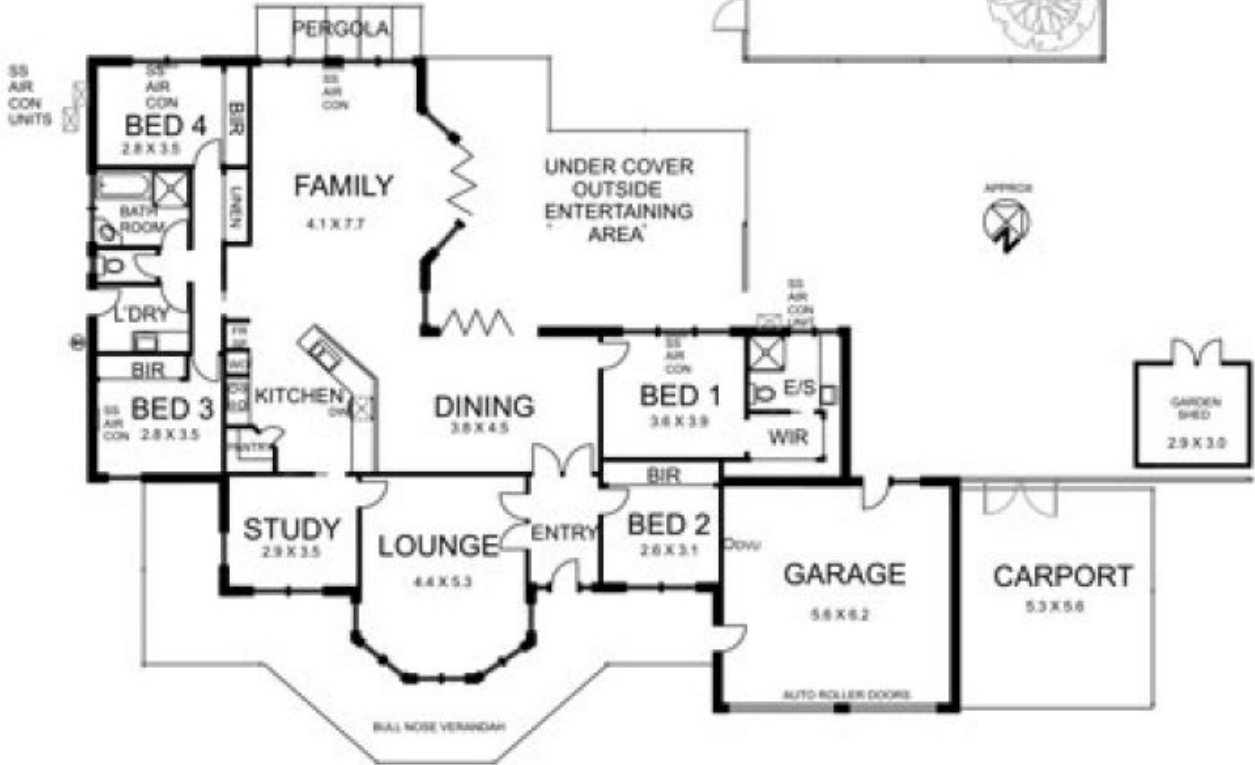
WOOD SETTING
GARAGE / WORKSHOP
 4.2 x 6.0

RWT



SCREEN
 POOL PUMP & FILTER

- LEGEND...
- BIR. BUILT IN ROBE
 - C. CUPBOARD
 - DVU. DUCTED VACUUM UNIT
 - DW. DISHWASHER
 - E/S. EN-SUITE
 - FR. SP. FRIDGE SPACE
 - L'DRY. LAUNDRY
 - RWT. RAIN WATER TANK
 - SS AIR CON. SPLIT SYSTEM AIR CONDITIONER
 - SS AIR CON UNIT
 - SPLIT SYSTEM AIR CONDITIONER UNIT
 - WH. WATER HEATER
 - WIR. WALK IN ROBE
 - WO. WALL OVEN



DRAWING IS FOR ILLUSTRATION PURPOSES ONLY. NOT DRAWN TO SCALE. ALL MEASUREMENTS ARE APPROXIMATE ONLY.