

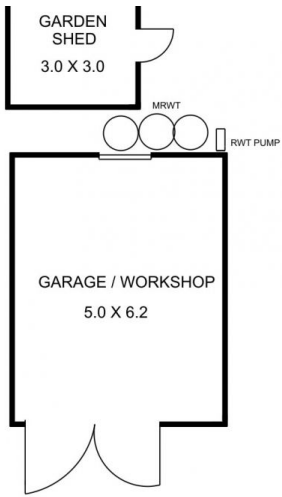


45 Goode Street GISBORNE VIC

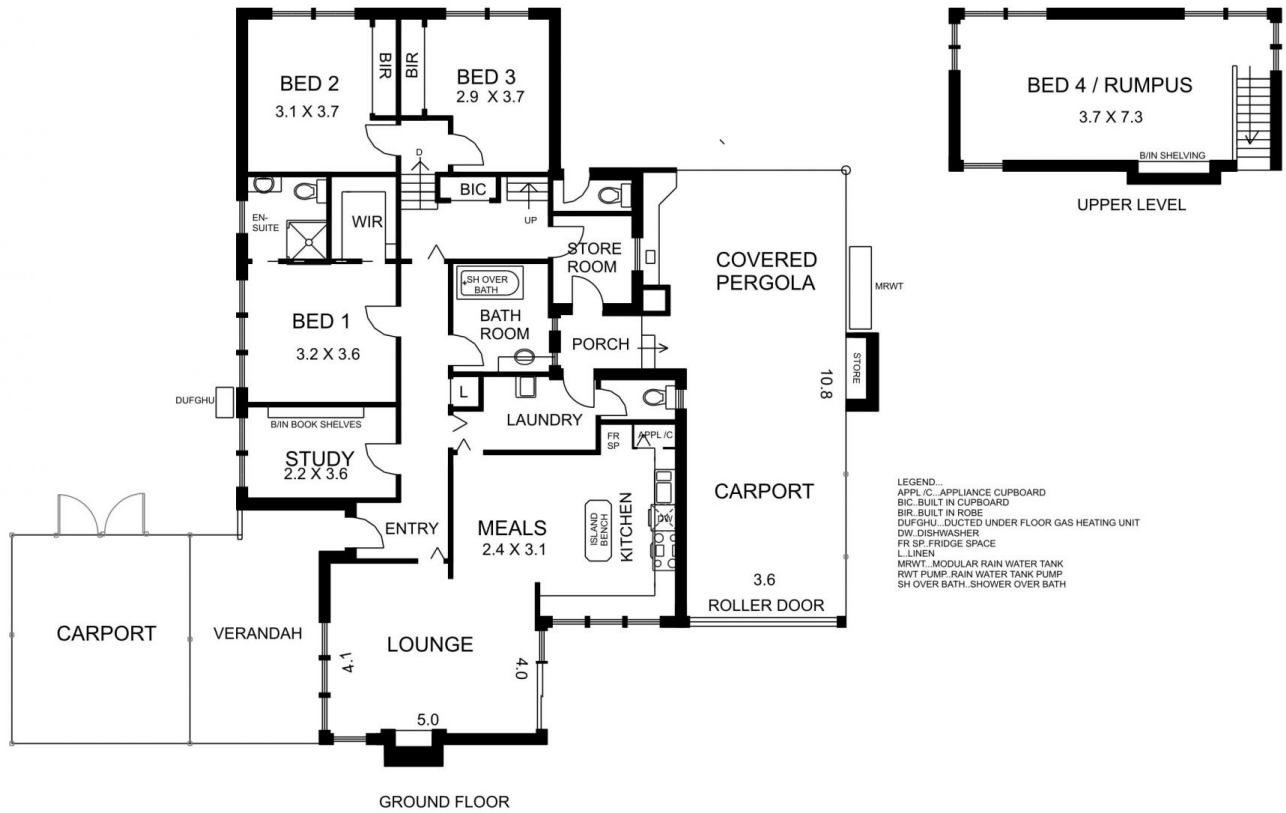
3 2

Wide tree lined street and easy walking distance to all facilities. Accommodation is on three levels and offers country style kitchen/meals, separate sitting room, 3 bedrooms and study plus large 4th bedroom or rumpus, modern bathroom and ensuite. Natural gas central heating, evaporative cooling, polished timber floors, rainwater tanks and more. Masses of covered outdoor area, carport and lock-up shed. Extensive paving. A cosy family home or very convenient retirement proposition. E.S.R \$500,000 - \$550,000

Type : House
Building Size : 20 sqm
Land Size : 1010 sqm
View : <https://www.kennedyandhunt.com.au/sale/vic/macedon-ranges/gisborne/residential/house/5849064>



NOTE : OUTBUILDINGS NOT IN ACTUAL POSITION TO HOUSE.



DRAWING IS FOR ILLUSTRATION PURPOSES ONLY .NOT DRAWN TO SCALE. ALL MEASUREMENTS ARE APPROXIMATE ONLY.