



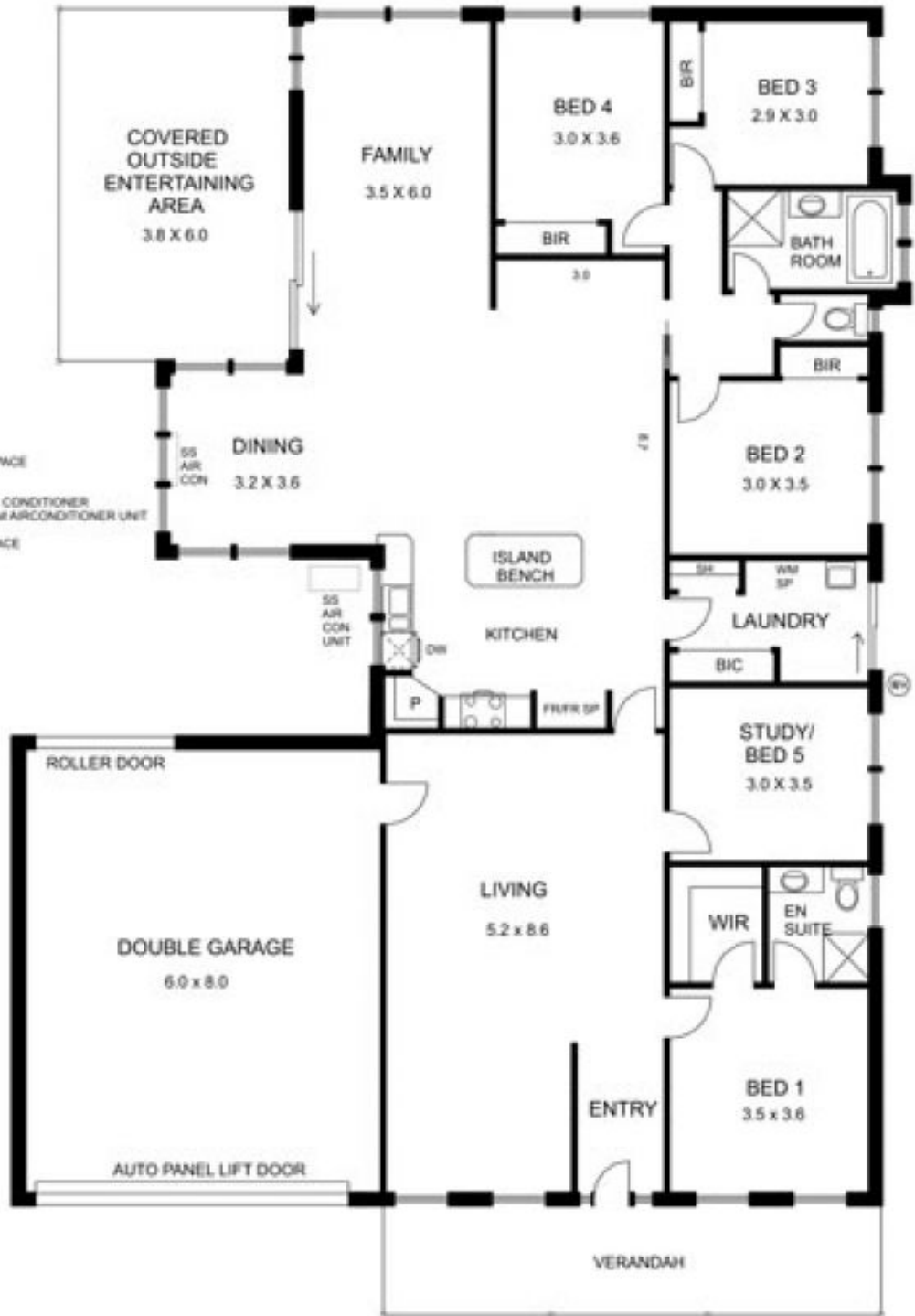
12 Pinelea Grove GISBORNE VIC

4 2 2

Generous family accommodation with notes of character inside and out. Two spacious living areas, 4 good sized bedrooms, study (or 5th bedroom), ensuite, family bathroom, laundry and undercover alfresco area. Double integrated garage and garden shed. Brass light switches, period style light fittings, 2.7m ceilings all add to the ambience. Life in this little pocket of Gisborne could be just what you are looking for!

Type : House
Building Size : 22 sqm
Land Size : 1005 sqm
View : <https://www.kennedyandhunt.com.au/sale/vic/macedon-ranges/gisborne/residential/house/5849065>

- LEGEND
 BIC BUILT IN CUPBOARD
 BIR BUILT IN ROBE
 DW DISHWASHER
 FR FRIDGE FREEZER SPACE
 F PANTRY
 SH SHELVING
 SS AIR CON. SPLIT SYSTEM AIR CONDITIONER
 SS AIR CON UNIT. SPLIT SYSTEM AIRCONDITIONER UNIT
 WH WATER HEATER
 WM SP WASHING MACHINE SPACE



DRAWING IS FOR ILLUSTRATION PURPOSES ONLY. NOT DRAWN TO SCALE. ALL MEASUREMENTS ARE APPROXIMATE ONLY.