



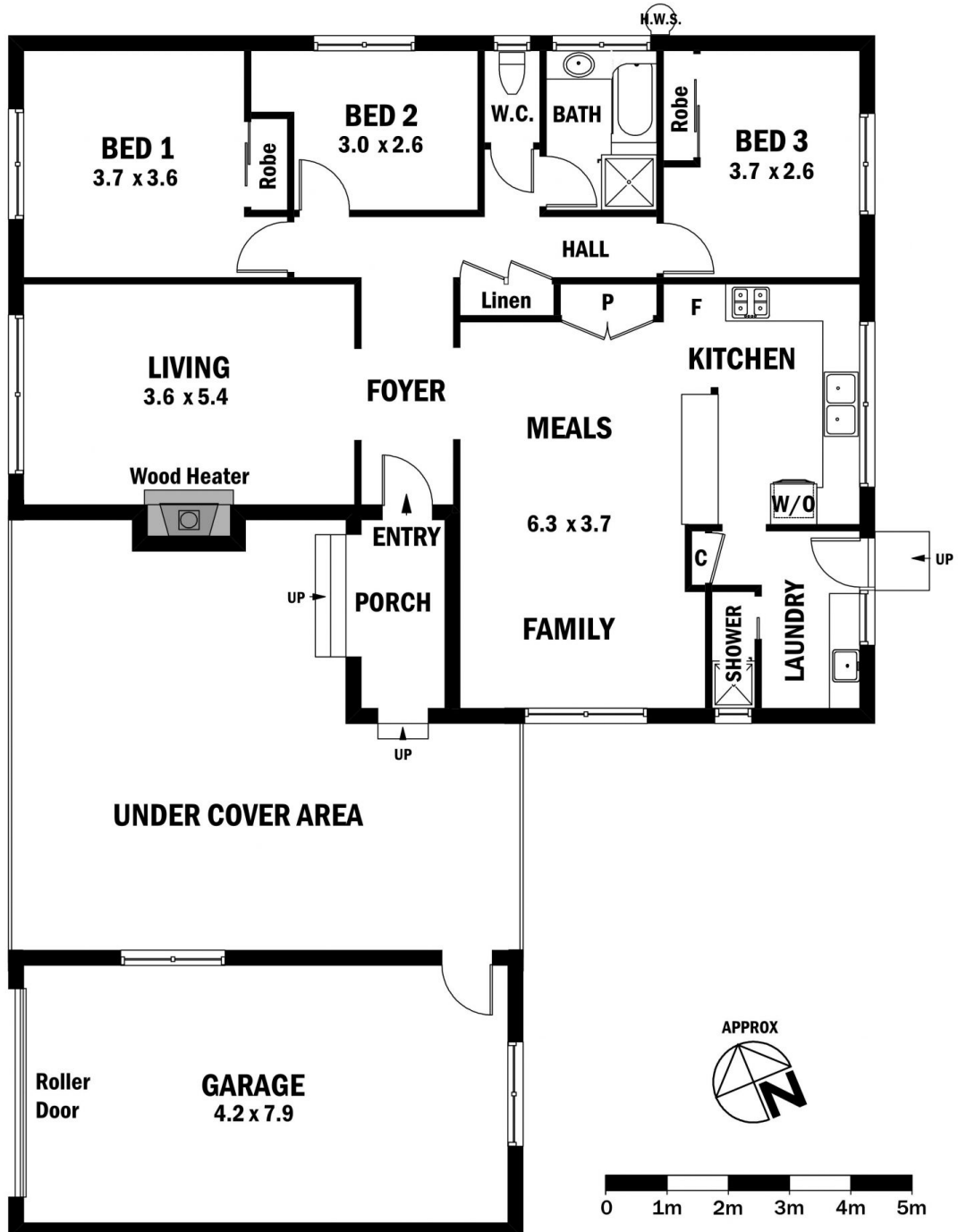
11 Worcester Road GISBORNE VIC

3 1 3

Ever popular part of Gisborne and within easy strolling distance of the township. Very affordable home offering three bedrooms, bathroom and shower room, kitchen/meals area and cosy lounge with slow combustion heater. Huge carport/garage/portico at the front of the property and spacious rear garden with established trees. This is an affordable home in a sought after neighbourhood.

Type : House
Building Size : 16 sqm
Land Size : 1180 sqm
View : <https://www.kennedyandhunt.com.au/sale/vic/macedon-ranges/gisborne/residential/house/5849072>

11 WORCESTER RD GISBORNE



DRAWING IS FOR ILLUSTRATION PURPOSES ONLY. NOT DRAWN TO SCALE.
ALL MEASUREMENTS ARE APPROXIMATE ONLY.
NEITHER THE VENDOR OR THE AGENT ARE RESPONSIBLE FOR ANY ERRORS OR OMISSIONS.
IT IS UP TO THE PURCHASERS TO VERIFY ALL INFORMATION.