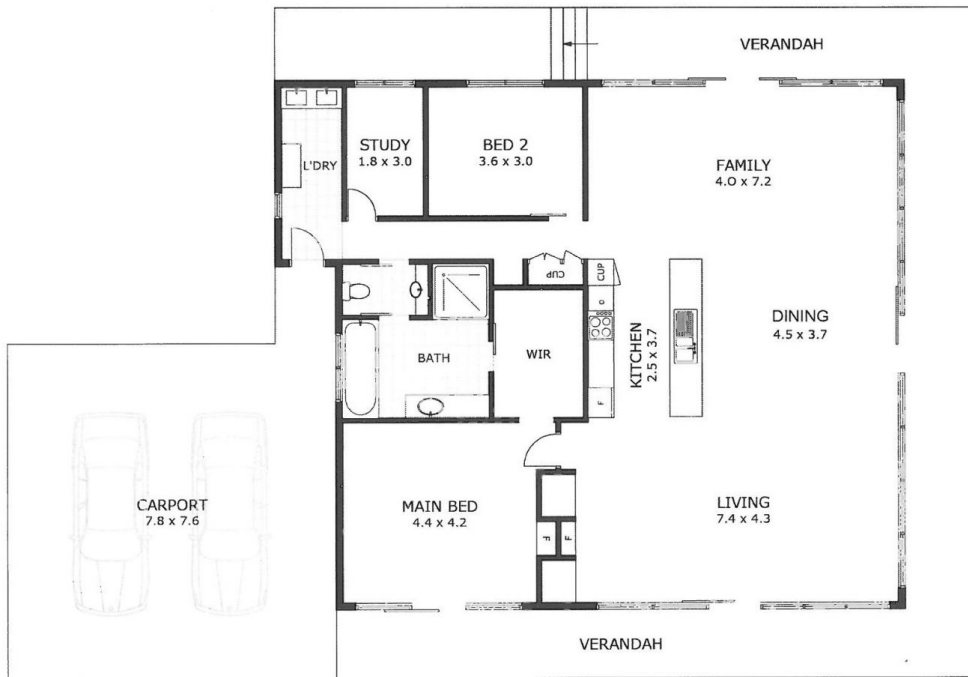


268 Institute Road CARLSRUHE VIC

2 1 2

Brilliant long distance views, magic sunsets, absolute privacy and an attractive eco-friendly dwelling plus outbuildings right on the edge of the Cobaw state forest but within easy distance to Calder Freeway and beyond. Beautiful riding trails and nature study opportunities abound. High quality weekend retreat or simplify your lifestyle and let the peace weave its magic on you and your family!

Type : Acreage/Semi-Rural
Building Size : 13 sqm
View : <https://www.kennedyandhunt.com.au/sale/vic/greater-bendigo-region/carlsruhe/residential/acreagesemirural/5849078>



Scale in metres. Indicative only. Dimensions are approximate. All information contained herein is gathered from sources we believe to be reliable. However we cannot guarantee its accuracy and interested parties should rely on their own enquiries.

Residence - 168 m²
 Carport - 62 m²
 Verandah - 75 m²



268 Institute Road, Karlsruhe