



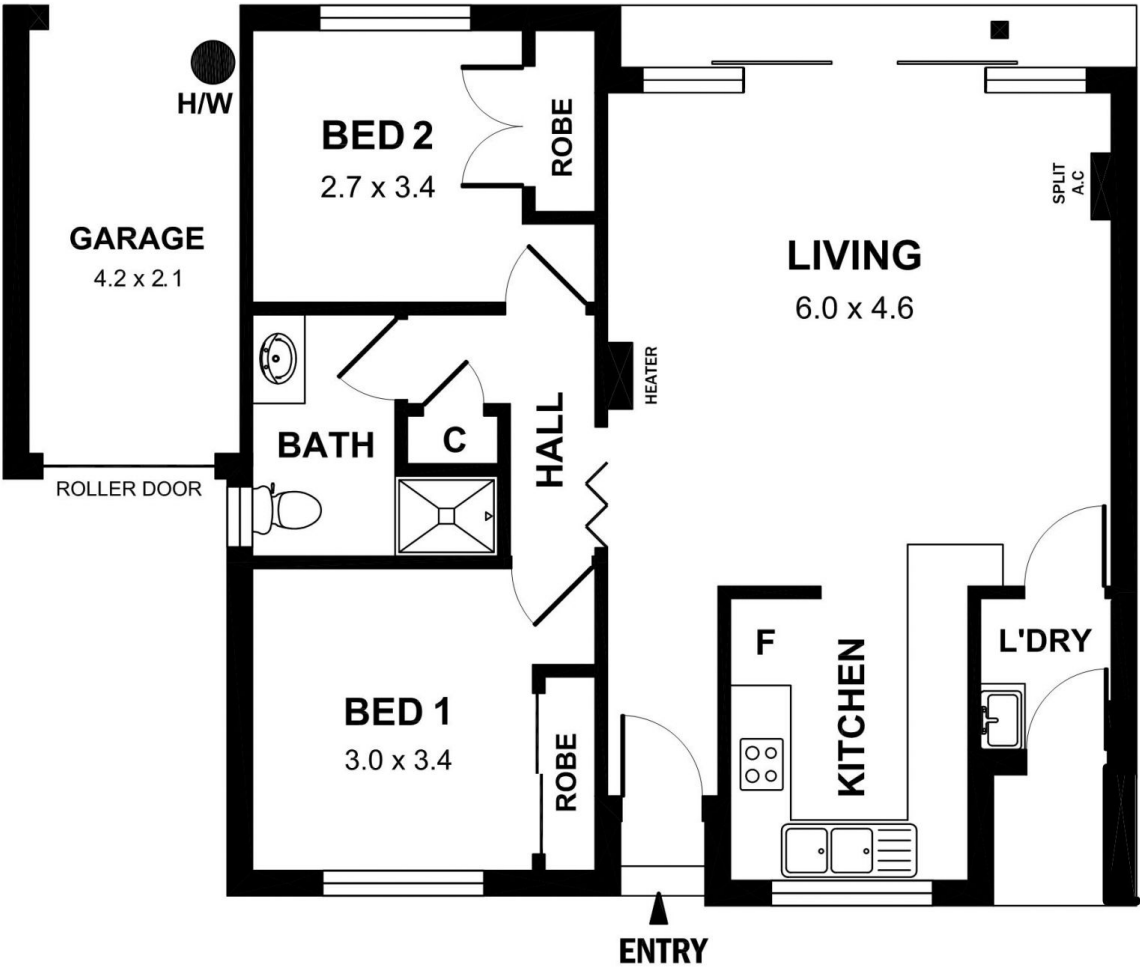
3/25 Prince Street GISBORNE VIC

2 1 1

An affordable property within a prime location. Offering two bedrooms, large shower room, modern kitchen adjoining meals/living area and separate laundry. North facing courtyard garden and carport. This property offers in town living at a very affordable level. Reap the benefits of putting your own stamp on this mid-town property.

Type : Unit
Building Size : 8 sqm
View : <https://www.kennedyandhunt.com.au/sale/vic/macedon-ranges/gisborne/residential/unit/5849091>

UNIT 3/25 PRINCE STREET, GISBORNE



APPROX. GROSS INTERNAL FLOOR AREA 74 SQ M
TOTAL AREA INCLUDING DECK AREAS 80 SQM

DRAWING IS FOR ILLUSTRATION PURPOSES ONLY. NOT DRAWN TO SCALE. ALL MEASUREMENTS ARE APPROXIMATE ONLY.
NEITHER THE VENDOR OR THE AGENT ARE RESPONSIBLE FOR ANY ERRORS OR OMISSIONS.
IT IS UP TO THE PURCHASERS TO VERIFY ALL INFORMATION