



19 Pleasant View Court GISBORNE VIC

3 2 2

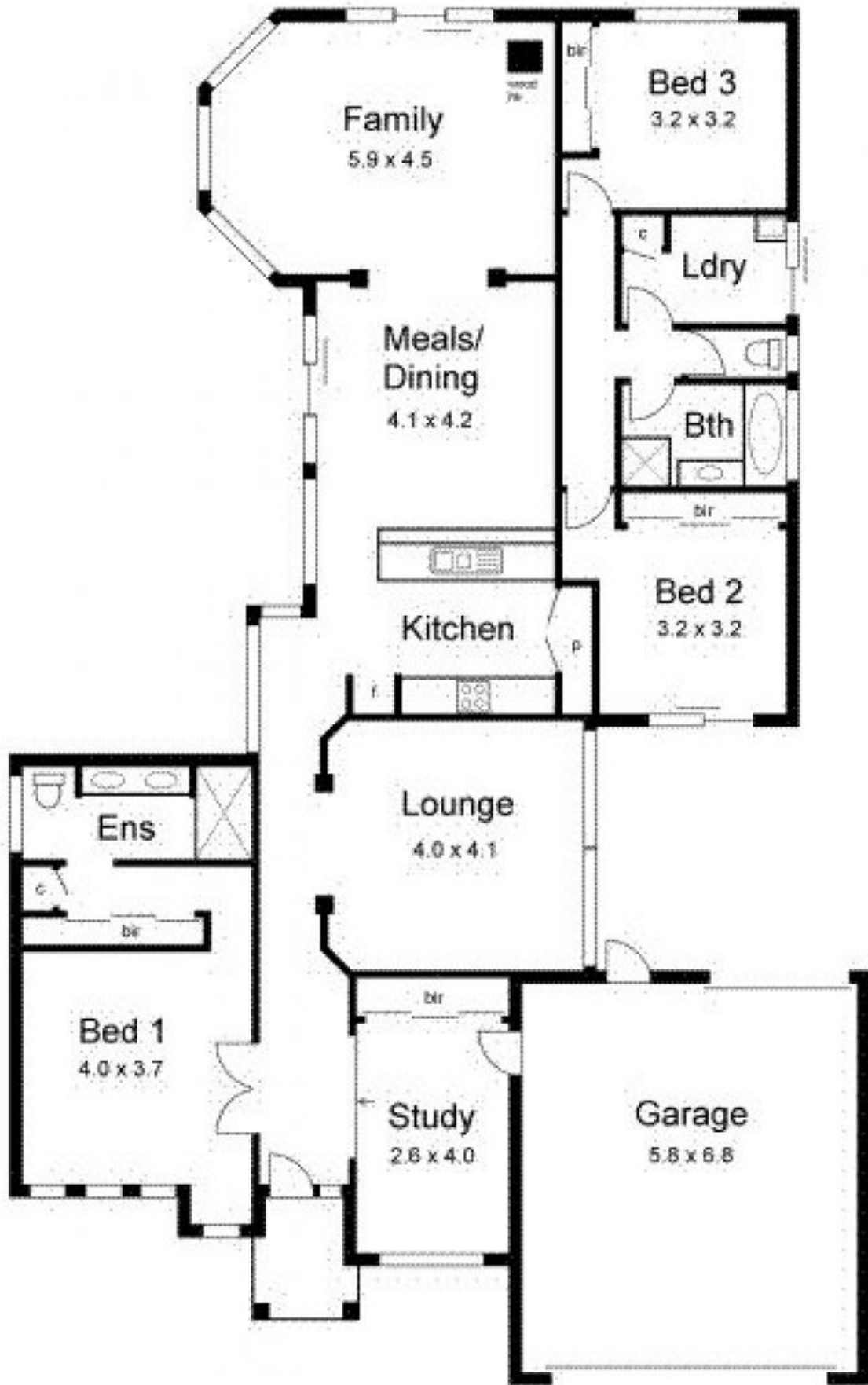
Contemporary family home well positioned in generous garden. Includes 3 living areas, 3 good sized bedrooms, (master with WIR and ensuite), separate bathroom and WC, study (or 4th bedroom) with built in cupboards. The galley kitchen overlooks the dining area and large lounge. Established garden and alfresco entertaining area. With all services connected, the home has an integrated 2 car garage with storage room, garden shed and water tank. Well positioned to all amenities including the town centre, train station, schools and easy link to freeway.

Property Code: 638

Type : House
Building Size : 19 sqm
Land Size : 670 sqm
View : <https://www.kennedyandhunt.com.au/sale/vic/macedon-ranges/gisborne/residential/house/5849104>



Jason Kennedy
03 5428 2544



All measurements are approximate