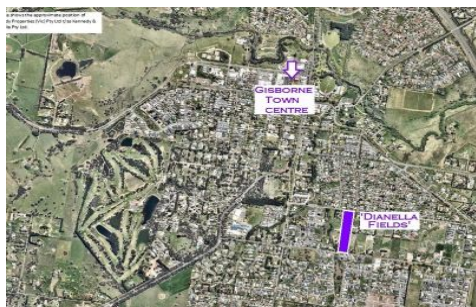


LOT NUMBER	SIZE M <sup>2</sup>
1	572
5	390
6	772
7	663
8	700
9	648
10	568
11	574

ALL DRAWINGS AND MEASUREMENTS ARE APPROXIMATE AND SUBJECT TO CHANGE WITHOUT NOTICE



### Lot 10/ Dianella Fields GISBORNE VIC

Here is your chance to secure the last available allotment in stage 1 of this highly prestigious development.

Fantastic 568 sqm (approx) corner block, expected to title by September 2019.

This subdivision is situated at 134 Willowbank Road and 65 Fersfield Road, Gisborne we anticipate that the final allotment wont last long!

Only a 5% deposit is required to secure this allotment.

Property Code: 2216

**Type** : Land  
**Price** : \$ 345,000  
**Land Size** : 568 sqm  
**View** : <https://www.kennedyandhunt.com.au/sale/vic/macedon-ranges/gisborne/residential/land/5849300>



**Jason Kennedy**  
03 5428 2544