

13 Vista Close Gisborne VIC

4 2 2

Set in a quiet street with lovely parkland areas. Featuring spacious light filled lounge to the front, plus further open plan dining / kitchen area. The dining area overlooks the leafy outdoor living space. Accommodation comprises 3 bedrooms plus 4th bedroom / study. The master bedroom is located to the front of the home and enjoys full ensuite and WIR. Huge second bedroom to the rear, with the added bonus of BIR's to all further bedrooms. Delightful low maintenance established gardens. Bonus features include natural gas ducted heating & stainless kitchen appliances. Perfect home for a young family, ideal for downsizers, or a dream investment property.

Type : House
Price : \$ 590,000
Building Size : 152 sqm
Land Size : 740 sqm
View : <https://www.kennedyandhunt.com.au/sale/vic/macedon-ranges/gisborne/residential/house/5849362>

[For full version visit the website](https://www.kennedyandhunt.com.au)

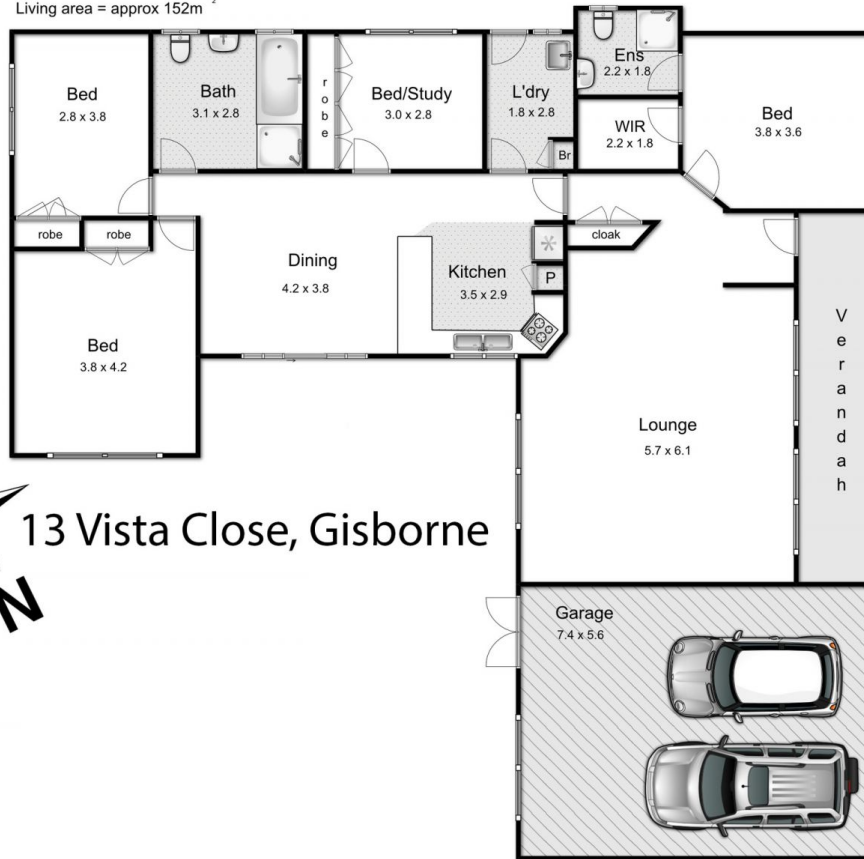


Jason Kennedy
03 5428 2544



Kirrily Evans
0428 264 224

Living area = approx 152m²



13 Vista Close, Gisborne

Whilst every attempt has been made to ensure the accuracy of the floor plan contained here, measurements of doors, windows, rooms and any other items are approximate and no responsibility is taken for any error, omission, or mis-statement. This plan is for illustrative purposes only and should be used as such by any prospective purchaser. The services, systems and appliances shown have not been tested and no guarantee as to their operability or efficiency can be given.