



150 Willowbank Road Gisborne VIC

4 🏠 2 🚗 2 🚗

Only a stone's throw from the heart of Gisborne - awaits this amazing opportunity just around the corner on Willowbank Road.

Offering loads of space to move, this light filled home enjoys lush low maintenance gardens, and great side access to the enormous private rear yard (complete with cubby house).

A highlight throughout this lovely home are the plantation shutters, which also feature to the glass sliding doors – ensuring the perfect amount of light enters at all times.

The private master bedroom is located to the front of the home and includes an ensuite bathroom and walk in robe.

Elegant open plan living area, incorporating the kitchen, dining and family room.

The central kitchen boasts stone bench tops, glass splash back & modern stainless steel appliances.

From here the light filled family room flows seamlessly

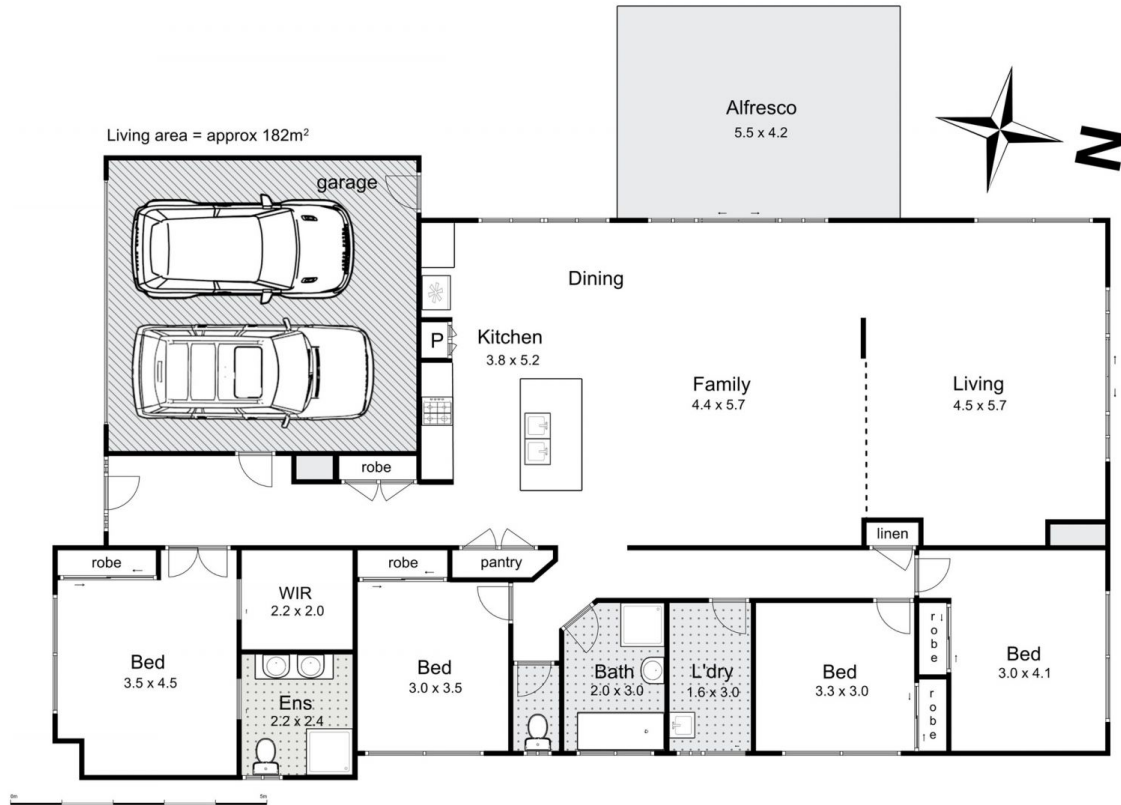
Price : Contact Agent
Land Size : 1100 sqm
View : <https://www.kennedyandhunt.com.au/sale/vic/macedon-ranges/gisborne/residential/house/5849423>



Jason Kennedy
03 5428 2544



Kirrily Evans
03 5428 2544



150 Willowbank Road, Gisborne

Whilst every attempt has been made to ensure the accuracy of the floor plan contained here, measurements of doors, windows, rooms and any other items are approximate and no responsibility is taken for any error, omission, or mis-statement. This plan is for illustrative purposes only and should be used as such by any prospective purchaser. The services, systems and appliances shown have not been tested and no guarantee as to their operability or efficiency can be given.