



### 26 Mount Vista Close New Gisborne VIC

3 2 2

Easy living open space floorplan will impress you with its livability.

Master bedroom with split system, walk in robe and ensuite.

Bedrooms 2 & 3 with built in robes and are serviced by the nearby central bathroom.

Well equipped kitchen with gas cooktop, electric oven, dishwasher & separate meals area.

The living area features a split system and leads to the alfresco area and pergola that overlook a wonderfully established garden.

Double integrated garage and gas ducted heating throughout complete this home.

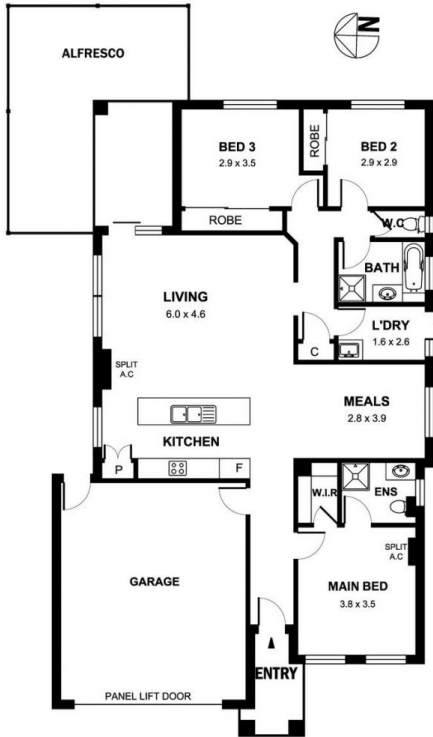
Available 26th June 2020.

\$495 per week.

\$2,151 per calendar month.

**View :** <https://www.kennedyandhunt.com.au/lease/vic/macedon-ranges/new-gisborne/residential/house/5849445>

26 MOUNT VISTA CLOSE, NEW GISBORNE



0 1m 2m 3m 4m 5m

APPROX. GROSS INTERNAL FLOOR AREA 157 SQ M

APPROX. GROSS EXTERNAL FLOOR AREA 37 SQ M

DRAWING IS FOR ILLUSTRATION PURPOSES ONLY. NOT DRAWN TO SCALE. ALL MEASUREMENTS ARE APPROXIMATE ONLY.  
NEITHER THE VENDOR OR THE AGENT ARE RESPONSIBLE FOR ANY ERRORS OR OMISSIONS.  
IT IS UP TO THE PURCHASERS TO VERIFY ALL INFORMATION