



262 Mount Gisborne Road Gisborne VIC

4 2 4

INSPECT BY APPOINTMENT. PHOTO ID REQUIRED.

Showcasing effortless grace and timeless elegance, this property will appeal to the most discerning of buyers. The mesmerizing setting is certain to take your breath away.

'NOVI GRAD' is truly one of the most magical propositions in Gisborne. You will indeed feel like you are ON TOP OF THE WORLD.

As you climb up the winding driveway, you will be overwhelmed by the sense that you are entering something highly unique and very special.

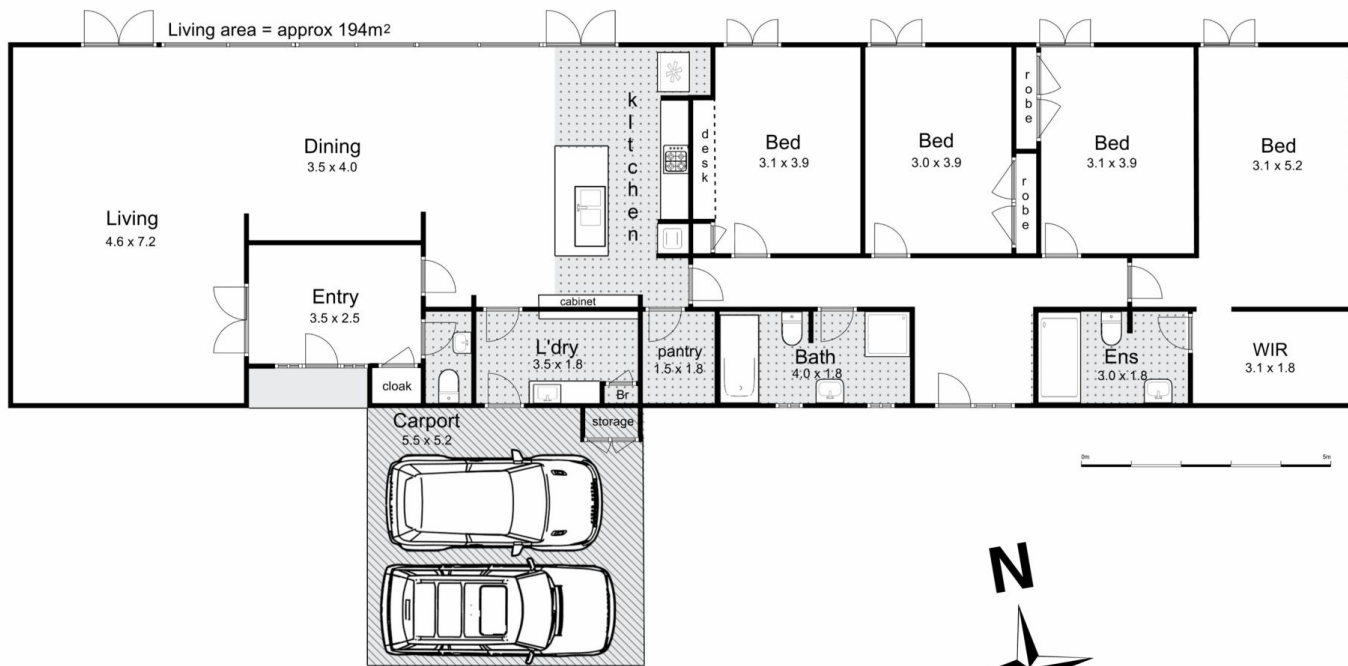
Cherished by one family for over 37 years, a well

[For full version visit the website](https://www.kennedyandhunt.com.au)

Type : House
Price : \$ 1,560,000
Building Size : 194 sqm
Land Size : 10 Acres
View : <https://www.kennedyandhunt.com.au/sale/vic/macedon-ranges/gisborne/residential/house/5849453>



Jason Kennedy
03 5428 2544



262 Mt Gisborne Road, Gisborne



Whilst every attempt has been made to ensure the accuracy of the floor plan contained here, measurements of doors, windows, rooms and any other items are approximate and no responsibility is taken for any error, omission, or mis-statement. This plan is for illustrative purposes only and should be used as such by any prospective purchaser. The services, systems and appliances shown have not been tested and no guarantee as to their operability or efficiency can be given.