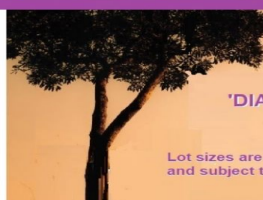


**BOTH LOTS UNDER OFFER**

**LOT 2 - 808 SQM (APPROX.)**  
\$384,000

**LOT 4 - 765 SQM (APPROX.)**  
\$372,000

Please note: All measurements and dimensions are approximate only



LOT 2 - 808 M2  
LOT 4 - 765 M2

'DIANELLA FIELDS'

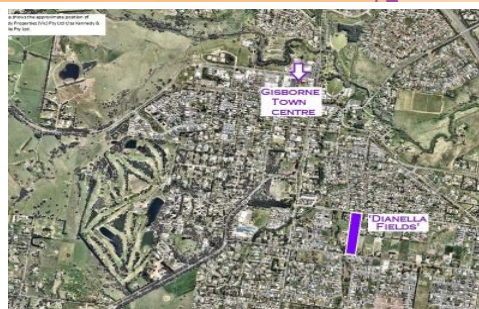
Lot sizes are approximate only and subject to change



**LOT 2 - 808 SQM (APPROX.)**  
\$384,000

**LOT 4 - 765 SQM (APPROX.)**  
\$372,000

Please note: All measurements and dimensions are approximate only and subject to change without notice



**1-6/67B Fersfield Road Gisborne VIC**

**BOTH LOTS NOW SOLD**

Here is your chance to secure your own parcel within this highly prestigious development.

With site construction underway, and titles expected approximately June 2021.

Only 2 lots currently available:

Lot 2, 67B FERSFIELD ROAD - 808 sqm (approx.)  
**SOLD**

Lot 4, 67B FERSFIELD ROAD - 765 sqm (approx.)  
**SOLD**

[For full version visit the website](https://www.kennedyandhunt.com.au)

**Type** : Land  
**Price** : \$ 372,000  
**Land Size** : 765 sqm  
**View** : <https://www.kennedyandhunt.com.au/sale/vic/macedon-ranges/gisborne/residential/land/5849461>



**Jason Kennedy**  
03 5428 2544