



9/96 Station Road Gisborne VIC

3 2 2

Set to impress with its free flowing floorplan, premium inclusions and abundance of natural light throughout, this townhouse delivers an easy-living lifestyle in a central location between Gisborne and New Gisborne.

The home's tastefully-appointed interior showcases on two levels; the ground level you will find a large master bedroom with ensuite and WIR showcasing a leafy green outlook, spacious and versatile open-plan living/dining area complimented by a sleek stone bench kitchen complete with splashback, quality appliances and double sliding doors opening out to the courtyard.

Second level consists of two further bedrooms with BIR's plus main bathroom and additional storage.

Additional features include gas ducted heating, 3 x reverse

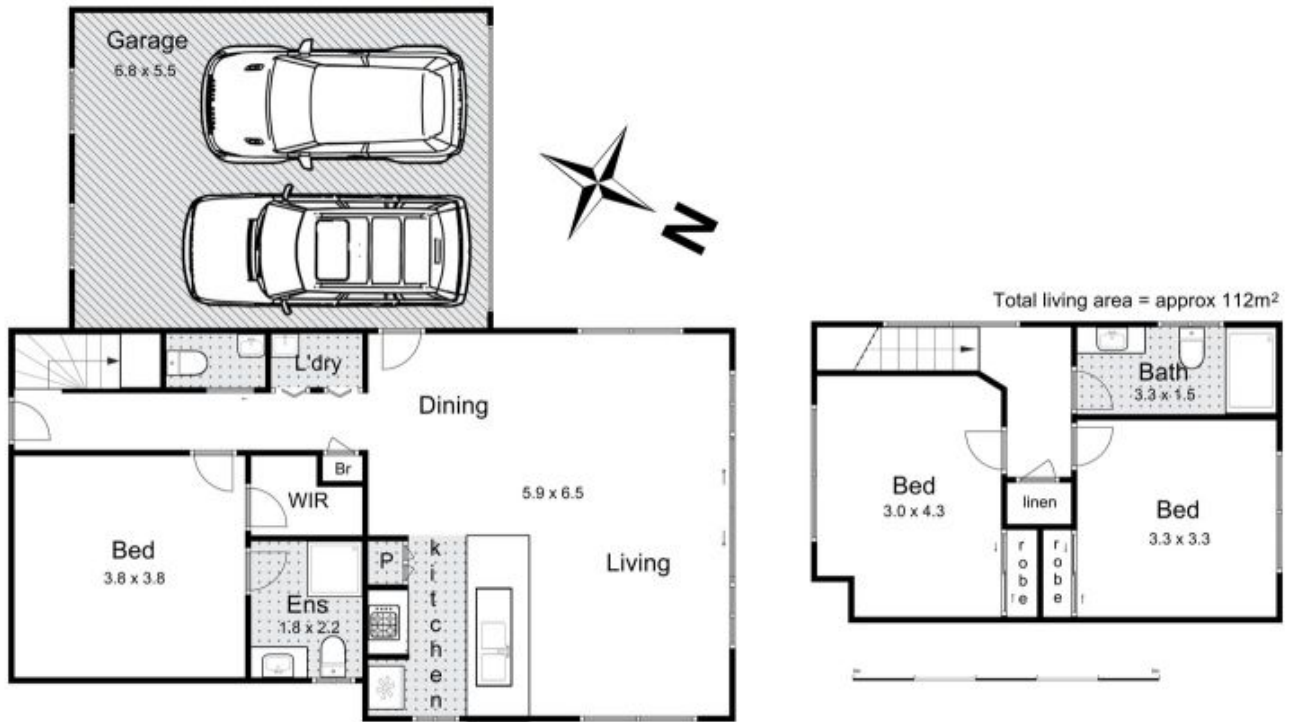
Price : Contract Signed
View : <https://www.kennedyandhunt.com.au/sale/vic/macedon-ranges/gisborne/residential/townhouse/6011720>



Kirrily Evans
03 5428 2544



Jason Kennedy
03 5428 2544



9/96 Station Rd, Gisborne

Whilst every attempt has been made to ensure the accuracy of the floor plan contained here, measurements of doors, windows, rooms and any other items are approximate and no responsibility is taken for any error, omission, or mis-statement. This plan is for illustrative purposes only and should be used as such by any prospective purchaser. The services, systems and appliances shown have not been tested and no guarantee as to their operability or efficiency can be given.