



19 The Boomerang Gisborne VIC

5 3 2

In a superb elevated location overlooking the picturesque rural township of Gisborne, this spacious home offers more room to move than most.

With a sleek and stylish kitchen that flows through to the open plan living / dining area, this home is perfect for a family looking for an easy-living space.

There is a separate lounge / theatre located to the front of the home, plus a large retreat space upstairs.

The stunning light filled kitchen boasts vast stone benchtops, butler's pantry, stainless appliances, and will suit those who love to entertain.

The dining / family room opens to the undercover alfresco area, which overlooks the private back yard.

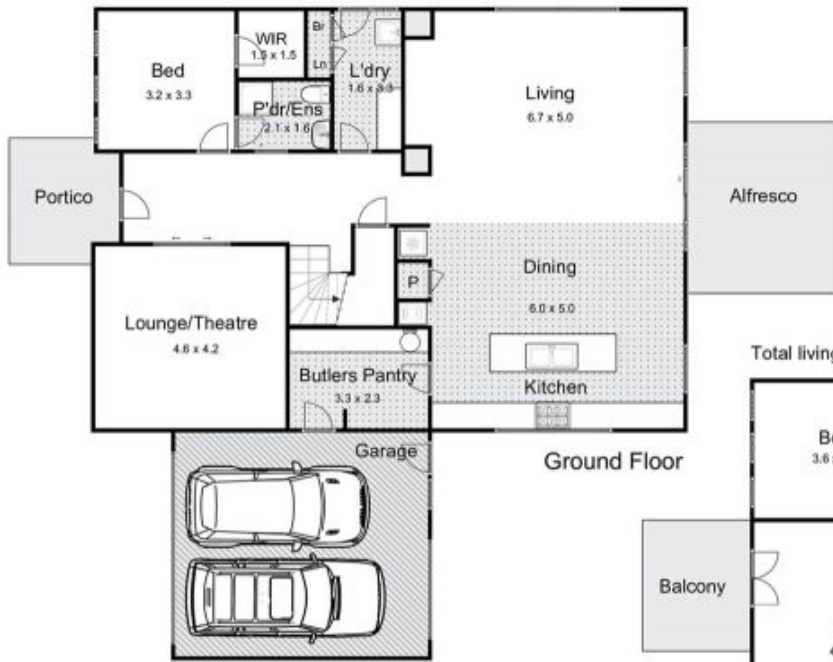
Price : \$ 1,100,000
Land Size : 756 sqm
View : <https://www.kennedyandhunt.com.au/sale/vic/macedon-ranges/gisborne/residential/house/6500014>



Jason Kennedy
03 5428 2544



Natalie Barbour
0493 067 546



Total living area = approx 280m²

19 The Boomerang, Gisborne



First Floor

Whilst every attempt has been made to ensure the accuracy of the floor plan contained here, measurements of doors, windows, rooms and any other items are approximate and no responsibility is taken for any error, omission, or mis-statement. This plan is for illustrative purposes only and should be used as such by any prospective purchaser. The services, systems and appliances shown have not been tested and no guarantee as to their operability or efficiency can be given.

