



28 Chessy Park Drive New Gisborne VIC

5 2 2

You will gain a sense of warmth and welcome from the moment you drive into this beautifully established, leafy street. The home is situated in the sought after Chessy Park Estate, offering space and convenience for the entire family.

Set on a generous allotment of approximately half an acre, this home caters for all of your parking and storage needs. The property offers generous side access to the rear; being ideal for caravans, boats, trailers, and any other family toys.

The possibilities continue inside this five bedroom home. From entry, you are greeted by an elegant entrance and formal lounge. As you continue, you cannot help but notice the Australian hardwood timber flooring that continues through to the open plan kitchen, complete with stone

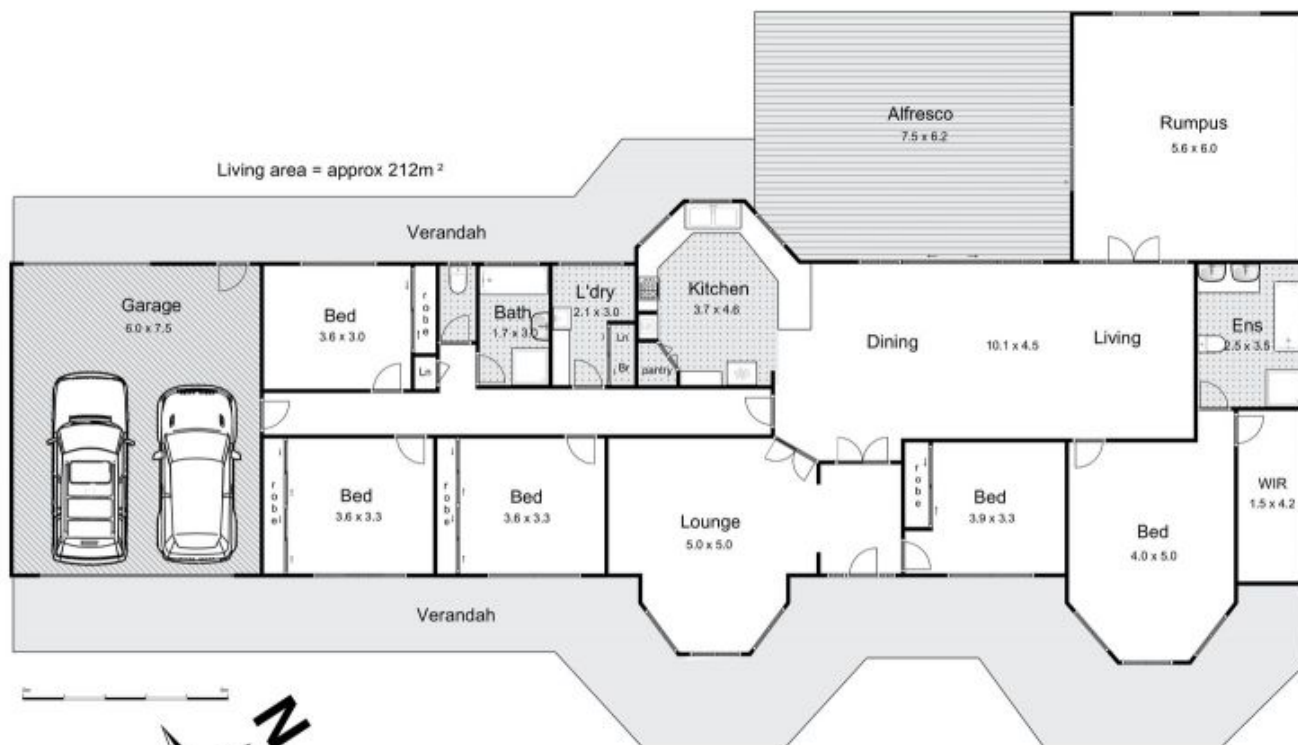
Price : \$ 1,200,000
Land Size : 2000 sqm
View : <https://www.kennedyandhunt.com.au/sale/vic/macedon-ranges/new-gisborne/residential/house/6500016>



Jason Kennedy
03 5428 2544



Natalie Barbour
0493 067 546



Scale bar: 0m to 5m



28 Chessy Park Drive, New Gisborne

Whilst every attempt has been made to ensure the accuracy of the floor plan contained here, measurements of doors, windows, rooms and any other items are approximate and no responsibility is taken for any error, omission, or mis-statement. This plan is for illustrative purposes only and should be used as such by any prospective purchaser. The services, systems and appliances shown have not been tested and no guarantee as to their operability or efficiency can be given.

