



**340 Sandy Creek Road Riddells Creek VIC**

3 2 2

Set on rolling hills which includes natural bushland, semi cleared bush, a tranquil spring fed creek, two dams (one spring fed), lush manicured gardens plus low maintenance terraced gardens - all beautifully framing the home.

Only 3.5 (approx.) km from Main Road, you will find yourself in a magical world of your own. As you meander down the driveway you will be embraced by a sense of calm, and won't want to leave.

The house itself is an inviting, immaculately maintained Cedar home. It has been lovingly constructed and nurtured since day one.

Entry is from the sweeping verandah into the light filled

[For full version visit the website](https://www.kennedyandhunt.com.au/sale/vic/macedon-ranges/riddells-creek/residential/house/6642652)

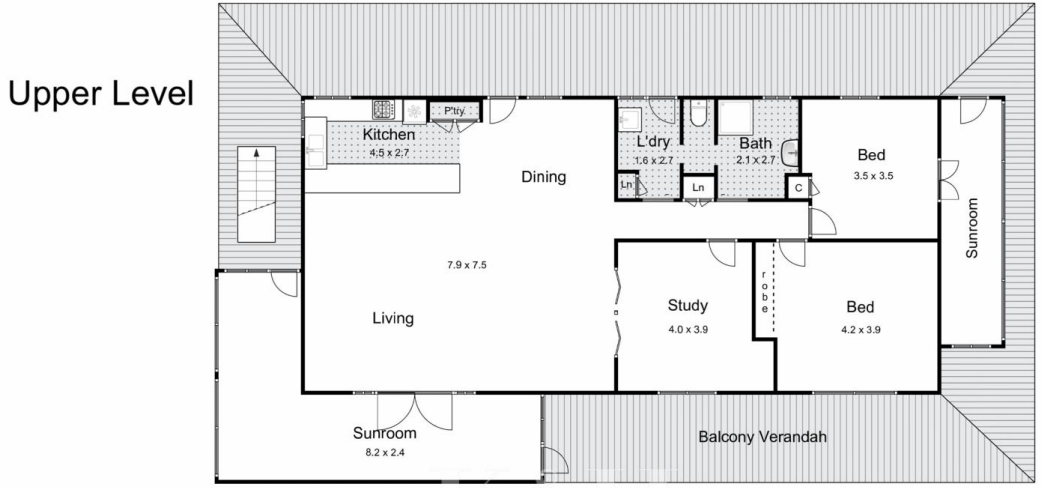
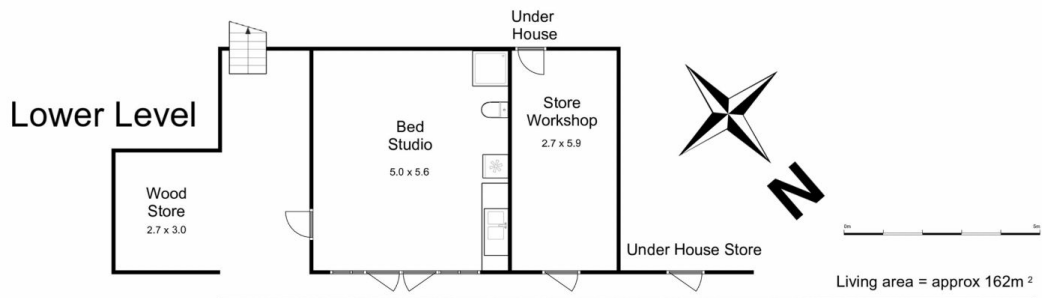
**Type** : House  
**Building Size** : 162 sqm  
**Land Size** : 30 Acres  
**View** : <https://www.kennedyandhunt.com.au/sale/vic/macedon-ranges/riddells-creek/residential/house/6642652>



**Jason Kennedy**  
03 5428 2544



**Natalie Barbour**  
0493 067 546



## 340 Sandy Creek Road, Riddells Creek

Whilst every attempt has been made to ensure the accuracy of the floor plan contained here, measurements of doors, windows, rooms and any other items are approximate and no responsibility is taken for any error, omission, or mis-statement. This plan is for illustrative purposes only and should be used as such by any prospective purchaser. The services, systems and appliances shown have not been tested and no guarantee as to their operability or efficiency can be given.