



317-433 Gisborne-Melton Road Toolern Vale VIC

4 🏠 2 🚗 10 🚗

Set amidst a magnificently private 222 acres (approx.), this magical 4 bedroom country estate offers a unique sense of homely grandeur, whilst preserving feelings of seclusion and privacy.

Set back from the road ensuring total serenity, whilst only minutes from major amenities. Life and vibrancy exude from this magnificent, luxurious homestead.

Offering mesmerizing views, this is one of the most magical country estates in the region.

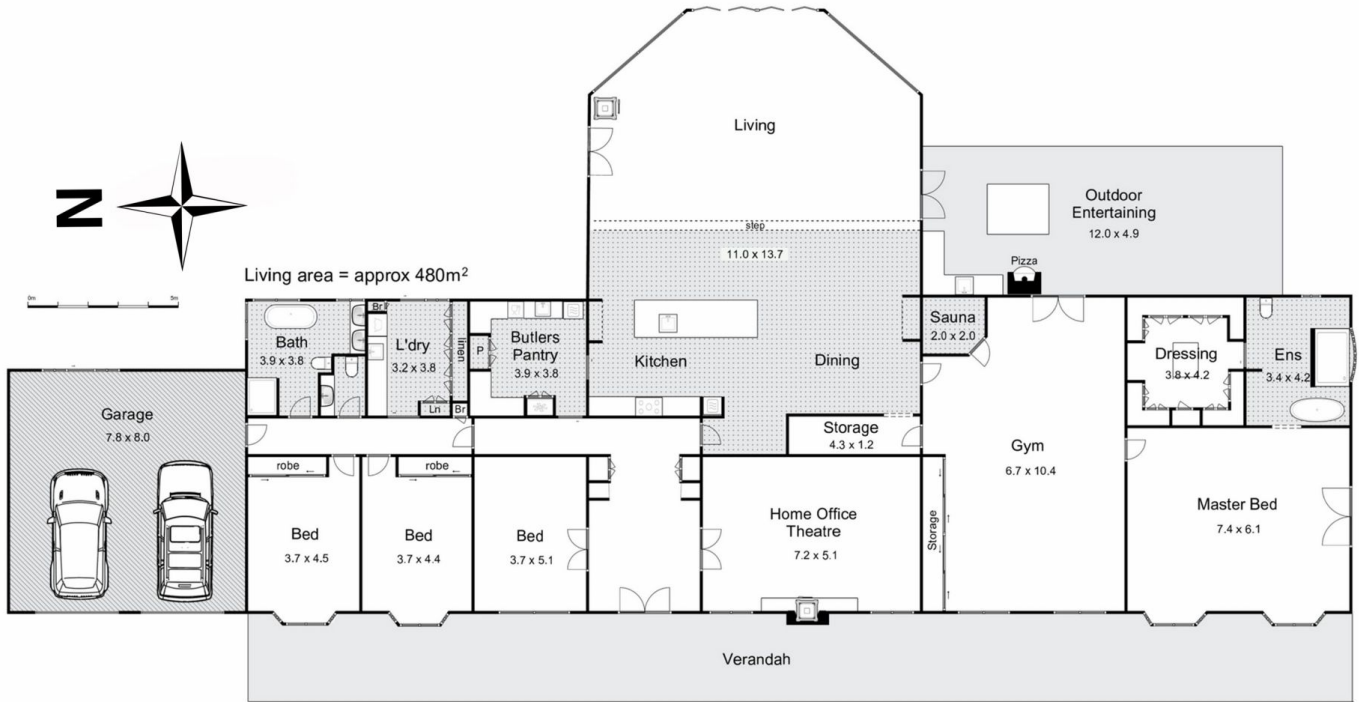
The grand entrance and winding driveway take you on a journey to the stunning residence where a deep verandah and large light filled foyer welcome you inside.

[For full version visit the website](https://www.kennedyandhunt.com.au)

Type : Rural
Price : \$ 4,500,000
Land Size : 90.12 ha
View : <https://www.kennedyandhunt.com.au/sale/vic/north-west/toolern-vale/residential/rural/7295035>



Jason Kennedy
03 5428 2544



317 - 433 Gisborne-Melton Road, Toolern Vale

Kennedy & Hunt

Whilst every attempt has been made to ensure the accuracy of the floor plan contained here, measurements of doors, windows, rooms and any other items are approximate and no responsibility is taken for any error, omission, or mis-statement. This plan is for illustrative purposes only and should be used as such by any prospective purchaser. The services, systems and appliances shown have not been tested and no guarantee as to their operability or efficiency can be given.

open2view.com.au