



223 Station Road New Gisborne VIC

4 2 6

Set on a huge allotment of over an acre. With lovely post and rail front fence, plus cast iron farm gate.

The circular driveway leads you past delightful gardens. With wrap around verandahs and delightful entryway.

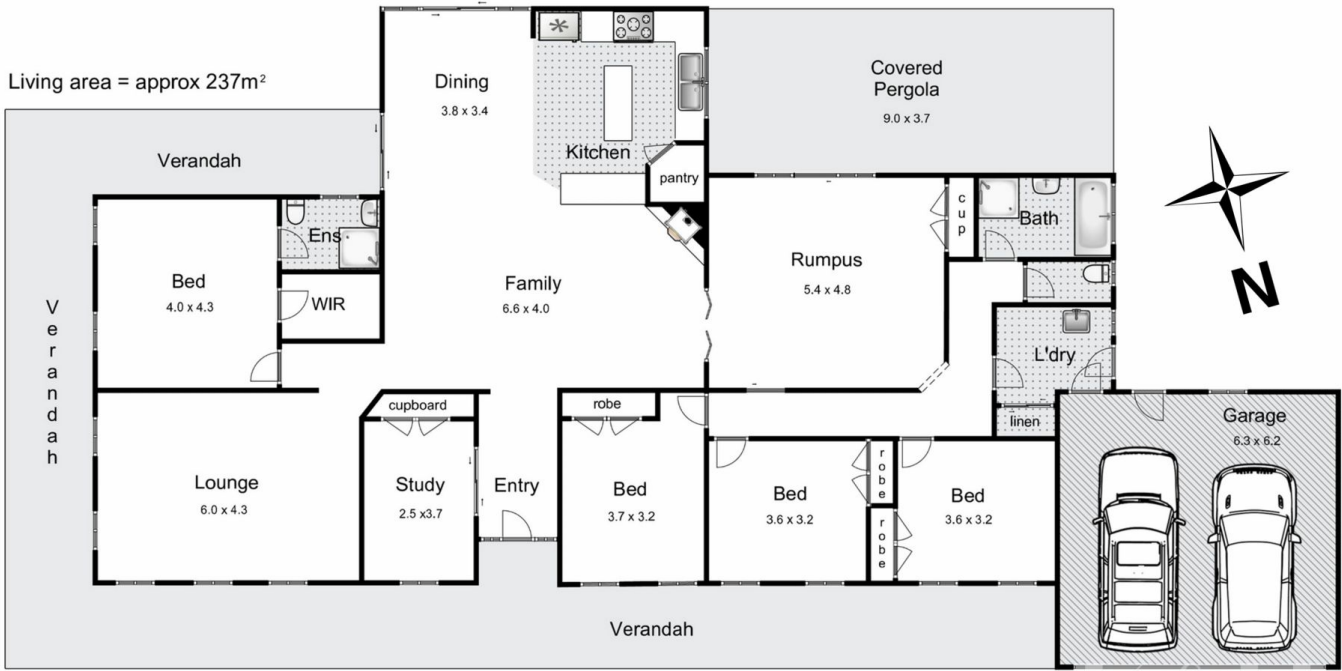
To the front of the home there is a study / 5th bedroom, which leads to the open plan family / dining area, which features SCWH.

The central kitchen has granite bench tops, WIP, butcher's block and striking black appliances.

There is a generous rumpus room located amidst 3 bedrooms all serviced by a family bathroom and separate

[For full version visit the website](https://www.kennedyandhunt.com.au)

Type : House
Land Size : 4632 sqm
View : <https://www.kennedyandhunt.com.au/lease/vic/macedon-ranges/new-gisborne/residential/house/7368901>



223 Station Road, New Gisborne

K & H
Kennedy & Hunt

Whilst every attempt has been made to ensure the accuracy of the floor plan contained here, measurements of doors, windows, rooms and any other items are approximate and no responsibility is taken for any error, omission, or mis-statement. This plan is for illustrative purposes only and should be used as such by any prospective purchaser. The services, systems and appliances shown have not been tested and no guarantee as to their operability or efficiency can be given.

open2view.com.au