

9 Cherry Lane Gisborne VIC

4 🏠 2 🚗 2 🚗

**AUCTION ON SITE: SATURDAY 25TH FEBRUARY 2023
AT 2PM - UNLESS SOLD PRIOR**

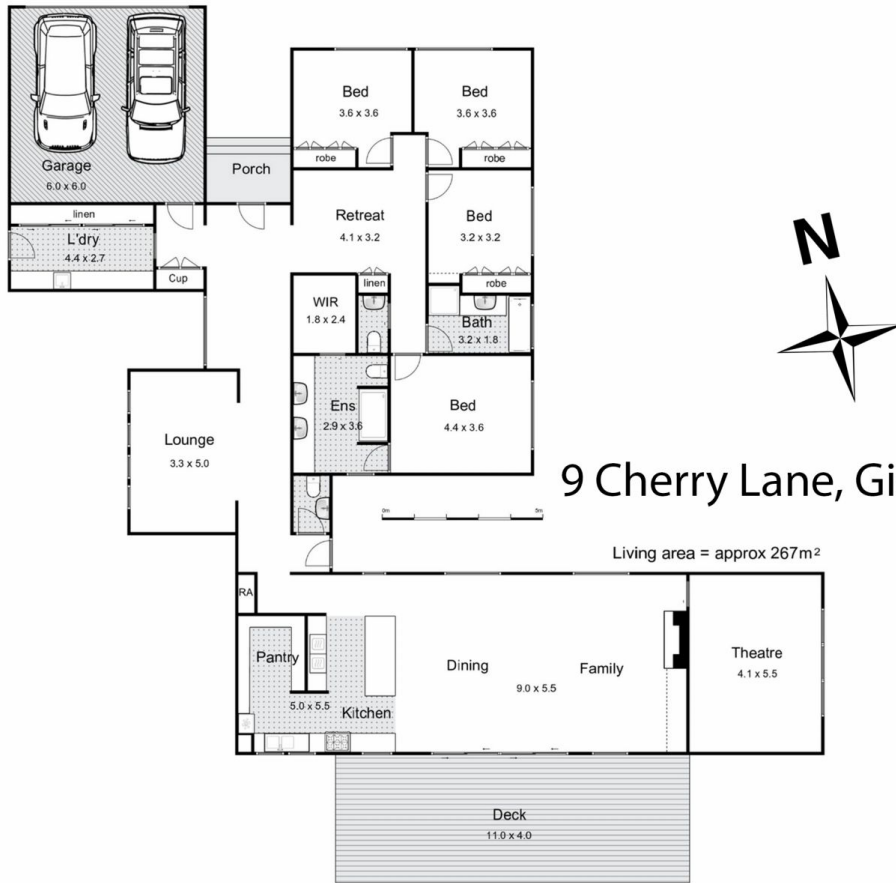
We welcome you to 9 Cherry Lane, Gisborne, an architecturally inspired family home. This astonishing home has been meticulously planned both inside and out, comprising of four bedrooms, four living zones, and situated on a large residential allotment of 1,617m² (approximately).

First impressions are unforgettable. You are welcomed by a contemporary façade, landscaped gardens, a grand entrance foyer complete with French Oak timber herringbone flooring that flows through the home, vaulted ceilings and a sense of grandeur, setting the tone for what you are yet to experience.

Price : \$ 1,670,000
Building Size : 28.8 sqm
Land Size : 1617 sqm
View : <https://www.kennedyandhunt.com.au/sale/vic/macedon-ranges/gisborne/residential/house/7370166>



Jason Kennedy
03 5428 2544



9 Cherry Lane, Gisborne

Whilst every attempt has been made to ensure the accuracy of the floor plan contained here, measurements of doors, windows, rooms and any other items are approximate and no responsibility is taken for any error, omission, or mis-statement. This plan is for illustrative purposes only and should be used as such by any prospective purchaser. The services, systems and appliances shown have not been tested and no guarantee as to their operability or efficiency can be given.