



**7 Correa Way New Gisborne VIC**

4 🚗 2 🚗 2 🚗

Situated in a sought-after family friendly locale, this near new home offers instant curb appeal; with thanks to the beautiful landscaped gardens.

Built by the renowned Quantum Homes, it has been thoughtfully designed to blend a sense of space with the warmth of a true family home.

Designed to exceed the expectations of a modern family, the fantastic floorplan incorporates a luxurious master. Privately located to the front of the residence, the master suite features an enviable WIR/dressing room and a spacious ensuite.

An adjacent study boasts custom built cabinetry, making it ideal for those looking to work from home.

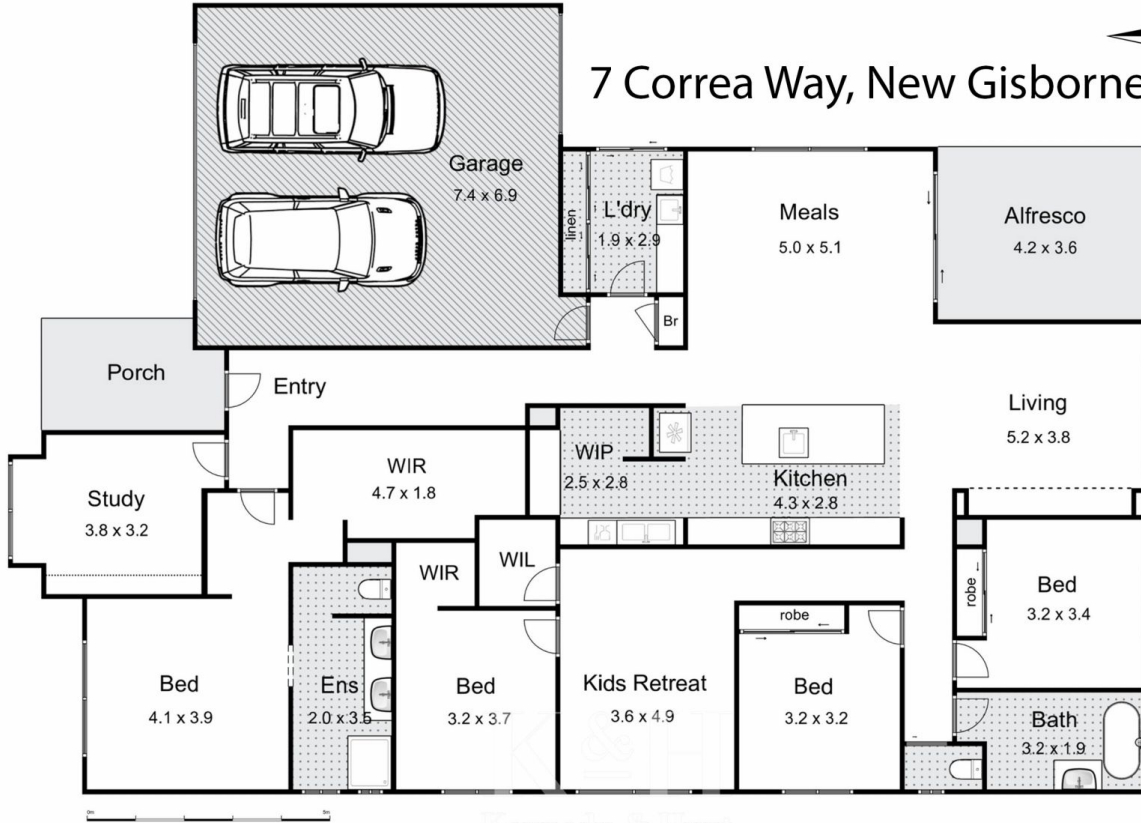
**Price** : \$ 1,300,000  
**Building Size** : 242 sqm  
**Land Size** : 711 sqm  
**View** : <https://www.kennedyandhunt.com.au/sale/vic/macedon-ranges/new-gisborne/residential/house/7384309>



**Jason Kennedy**  
03 5428 2544

Living area = approx 242m<sup>2</sup>

7 Correa Way, New Gisborne



Whilst every attempt has been made to ensure the accuracy of the floor plan contained here, measurements of doors, windows, rooms and any other items are approximate and no responsibility is taken for any error, omission, or mis-statement. This plan is for illustrative purposes only and should be used as such by any prospective purchaser. The services, systems and appliances shown have not been tested and no guarantee as to their operability or efficiency can be given.