



33 Lidderdale Drive Gisborne VIC

5 2 2

Be the first resident in a brand new five bedroom executive home.

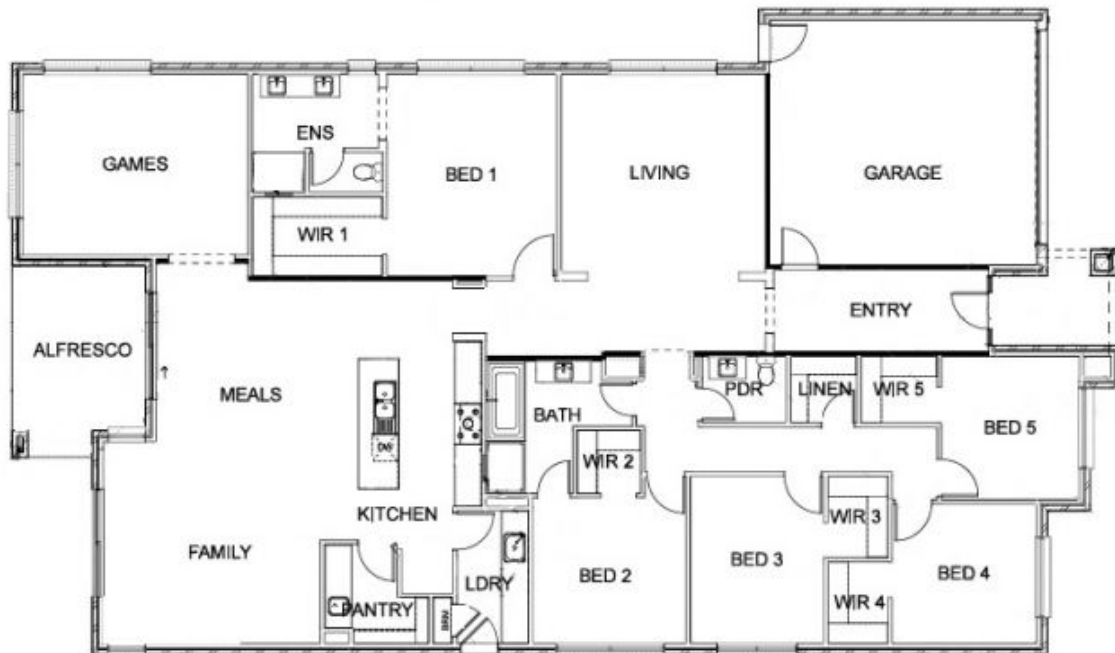
Generous family friendly floor plan, which includes separate rumpus / games room to the rear, light filled open plan meals / family area, in addition to a separate living room.

The central chef's kitchen boasts an island bench with stone tops, a butler's pantry, superb quality stainless appliances, and overlooks the bright family / dining area.

The main suite is located separately from the other four bedrooms and boasts a fabulous walk in robe, and a divine ensuite - complete with oversized shower, dual vanity and quality fixtures and fittings.

View : <https://www.kennedyandhunt.com.au/lease/vic/macedon-ranges/gisborne/residential/house/7662242>

33 LIDDERDALE DRIVE, GISBORNE



Whilst every attempt has been made to ensure the accuracy of the floorplan, no responsibility is taken for any error, omission or mis-statement.
This plan is for illustrative purposes only, and should be used as such.