



**14 Vernon Close New Gisborne VIC**

4 🚗 2 🚗 3 🚗

Situated in a sought-after locale, 14 Vernon Close has been thoughtfully designed to blend a sense of space with the warmth of a true family home.

Designed to exceed the expectations of a modern family, the fantastic floorplan incorporates a luxurious main bedroom suite. Privately located to the front of the residence, it features an enviable double WIR and a spacious ensuite complete with two separate vanities, large free-standing bath, shower and WC.

An adjacent study is ideal for those looking to work from home.

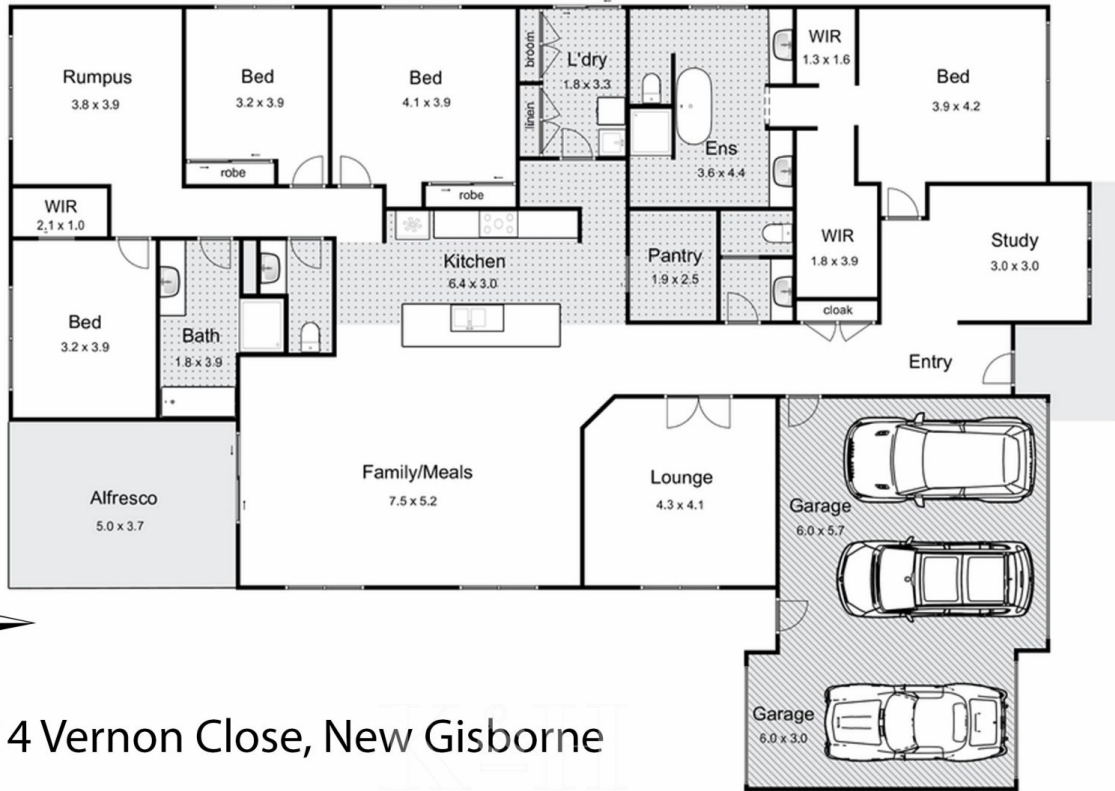
From the entrance hallway, double doors lead you to the large lounge which could be used as a home theatre or even a 5th bedroom.

**Price** : \$ 950,000  
**Building Size** : 264 sqm  
**Land Size** : 765 sqm  
**View** : <https://www.kennedyandhunt.com.au/sale/vic/macedon-ranges/new-gisborne/residential/house/7727068>



**Jason Kennedy**  
03 5428 2544

Living area = approx 264m<sup>2</sup>



## 14 Vernon Close, New Gisborne

Kennedy & Lynch

Whilst every attempt has been made to ensure the accuracy of the floor plan contained here, measurements of doors, windows, rooms and any other items are approximate and no responsibility is taken for any error, omission, or mis-statement. This plan is for illustrative purposes only and should be used as such by any prospective purchaser. The services, systems and appliances shown have not been tested and no guarantee as to their operability or efficiency can be given.