



**28 Snell Drive Gisborne VIC**

4 2 2

Presenting a sought after opportunity to be the first ever resident, in an immaculate, brand new, quality built family home.

**View** : <https://www.kennedyandhunt.com.au/lease/vic/macedon-ranges/gisborne/residential/house/7827369>

This great floor plan includes a light filled open plan living / meals area to the rear, plus a separate lounge to the front of the home.

The central kitchen boasts a huge island bench, quality appliances, an abundance of soft close drawers, and a fantastic walk in pantry.

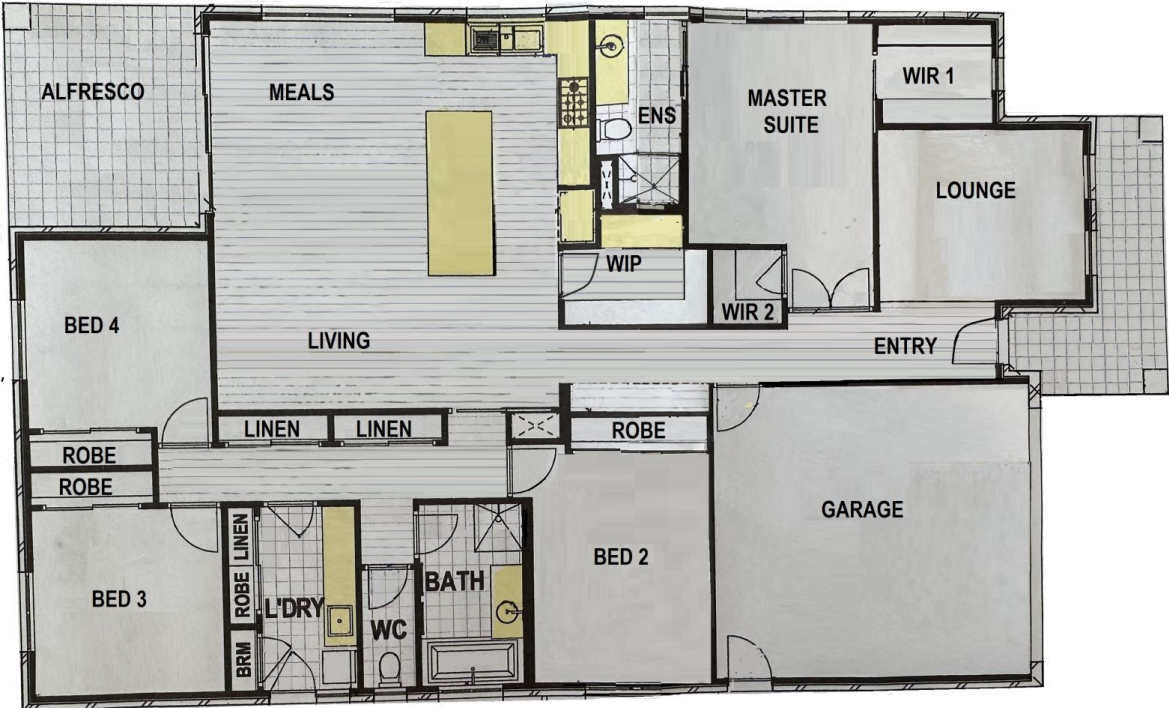


The open plan living area flows outdoors onto the covered alfresco.

**Property Management Team**  
**03 5428 2544**

The main suite is located to the front of the home with two separate walk in robes and a superb ensuite.

**28 SNELL DRIVE, GISBORNE**



Whilst every attempt has been made to ensure the accuracy of the floorplan, no responsibility is taken for any error, omission or mis-statement.  
This plan is for illustrative purposes only, and should be used as such.