



12 Kavanagh Court Gisborne VIC

3 2 3

Situated in a highly desirable locale, this lovingly constructed and impeccably maintained 'Stroud' home is only approximately four years young.

On the elevated side of the court on a large 1,626 m2 (approx.) allotment, 12 Kavanagh Court has instant kerb appeal with an inviting front façade, framed by beautiful, landscaped gardens.

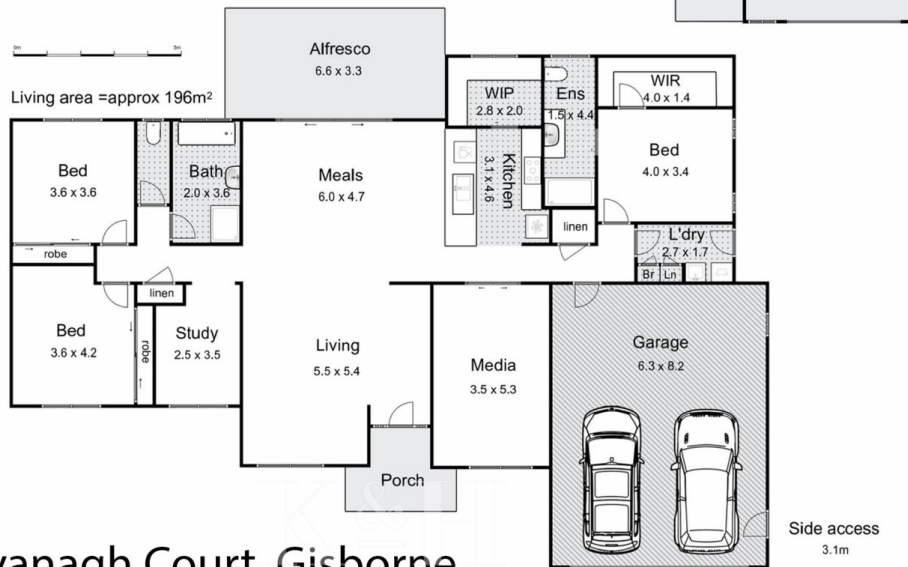
The property is thoughtfully designed, so that the living spaces make the most of the pretty elevated outlook, along with magical garden views.

As you enter this contemporary home, you are immediately welcomed by the light filled open plan kitchen / dining / living area.

Building Size : 196 sqm
Land Size : 1626 sqm
View : <https://www.kennedyandhunt.com.au/sale/vic/macedon-ranges/gisborne/residential/house/7830661>



Jason Kennedy
03 5428 2544



12 Kavanagh Court, Gisborne

Whilst every attempt has been made to ensure the accuracy of the floor plan contained here, measurements of doors, windows, rooms and any other items are approximate and no responsibility is taken for any error, omission, or mis-statement. This plan is for illustrative purposes only and should be used as such by any prospective purchaser. The services, systems and appliances shown have not been tested and no guarantee as to their operability or efficiency can be given.