

**10/262-264 Station Road New Gisborne VIC**

1 1 1

"Oak Cottage" is nestled in a lovely peaceful setting in 'The Mews', New Gisborne. This quality weatherboard cottage is positioned to the rear of the charming little pocket, housing only 10 other cottages, providing a secure and private environment.

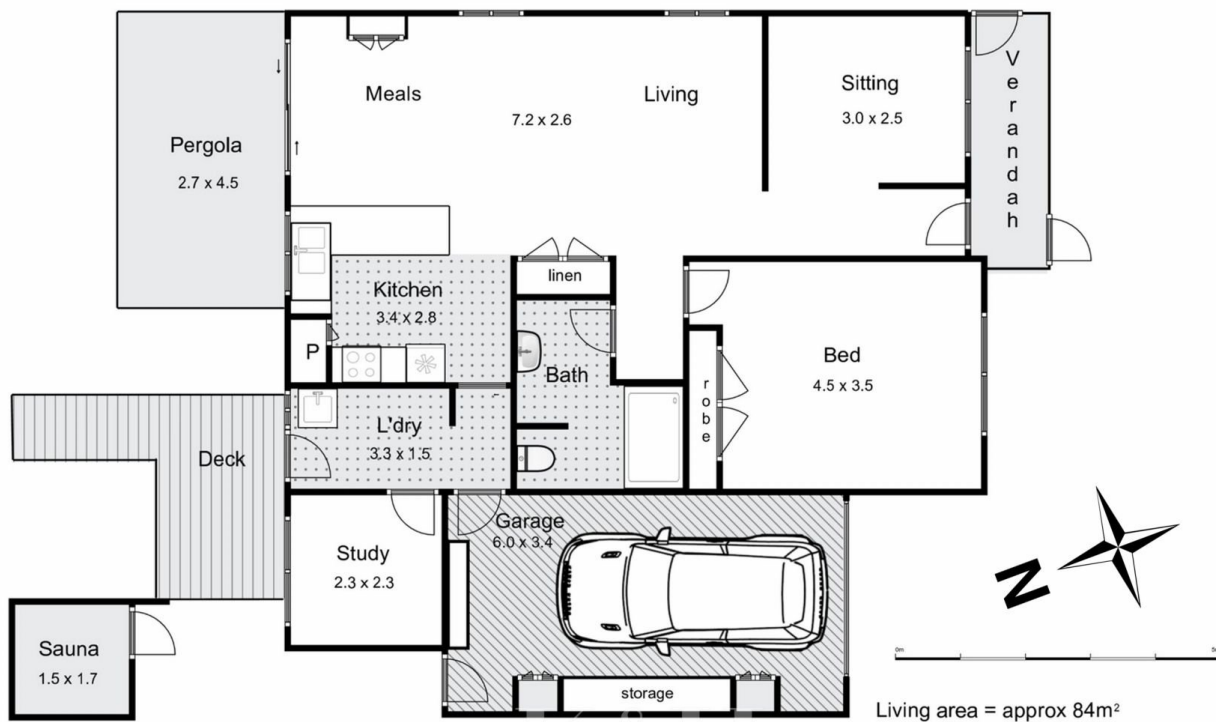
Beautifully appointed, this generously proportioned one bedroom cottage offers more than anticipated. A front sitting room, complemented by built in cabinetry, has a delightful garden outlook making it the perfect place to unwind.

The light filled open plan kitchen/meals/living featuring quality appliances, ample cupboard space, large bench, and built in cabinetry, connects seamlessly with the north facing courtyard and alfresco.

**Price** : \$ 565,000  
**Land Size** : 251 sqm  
**View** : <https://www.kennedyandhunt.com.au/sale/vic/macedon-ranges/new-gisborne/residential/townhouse/7897074>



**Jason Kennedy**  
**03 5428 2544**



## 10/262 Station Road, New Gisborne

Whilst every attempt has been made to ensure the accuracy of the floor plan contained here, measurements of doors, windows, rooms and any other items are approximate and no responsibility is taken for any error, omission, or mis-statement. This plan is for illustrative purposes only and should be used as such by any prospective purchaser. The services, systems and appliances shown have not been tested and no guarantee as to their operability or efficiency can be given.