



### 36 Mulgutherie Way Gisborne VIC

4 2 2

Welcoming you with unparalleled attention to detail, 36 Mulgutherie Way, boasts superior finishes and bespoke design, with the distinguished four-bedroom plus study home promising enduring quality.

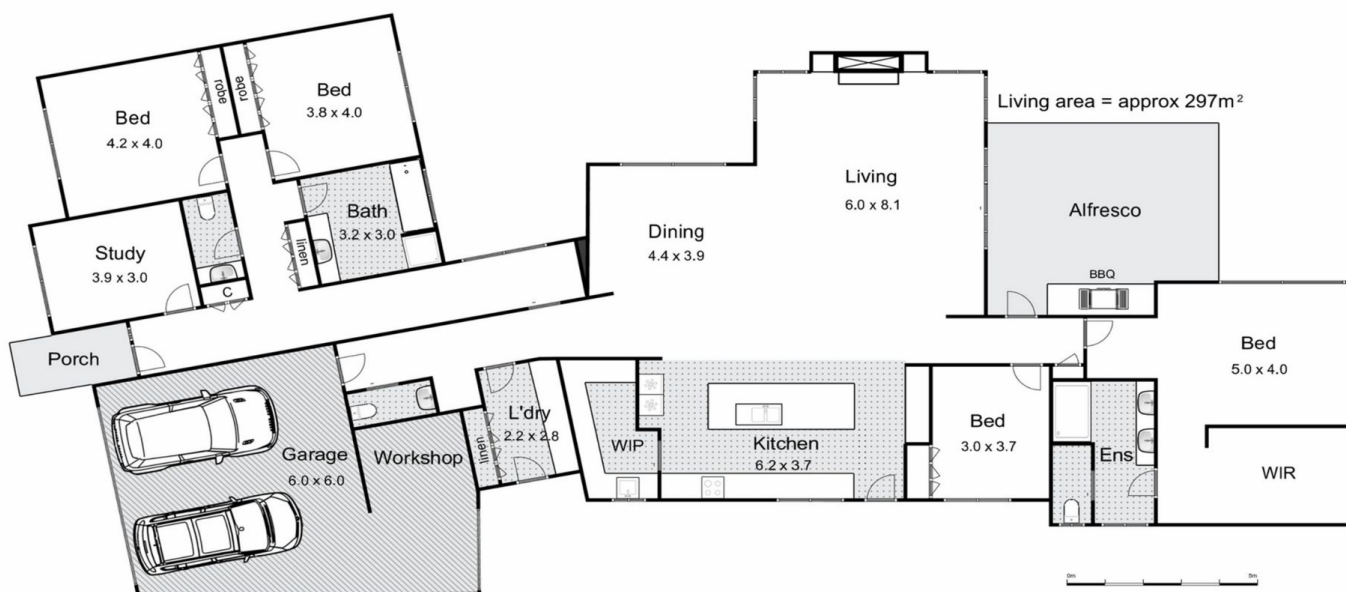
Nestled in one of Gisborne's prime locations, the understated contemporary facade belies the luxury and elegance within. Meticulously constructed by Mount Gisborne Homes, every aspect of this residence has been carefully considered, from its orientation on the 1,000m (approx.) allotment to optimize natural light, to its seamless integration with its garden surrounds to its impeccable interior finishes.

Travertine garden steps lead to a full-height glass entry door, creating an immediate sense of grandeur. Upon entry, a custom-fitted study overlooks the front garden

**Price** : \$1,850,000  
**Building Size** : 297 sqm  
**Land Size** : 1000 sqm  
**View** : <https://www.kennedyandhunt.com.au/sale/vic/macedon-ranges/gisborne/residential/house/7954218>



**Jason Kennedy**  
03 5428 2544



36 Mulgutherie Way, Gisborne



Whilst every attempt has been made to ensure the accuracy of the floor plan contained here, measurements of doors, windows, rooms and any other items are approximate and no responsibility is taken for any error, omission, or mis-statement. This plan is for illustrative purposes only and should be used as such by any prospective purchaser. The services, systems and appliances shown have not been tested and no guarantee as to their operability or efficiency can be given.

[open2view.com.au](https://open2view.com.au)