

Land Size - 2,000 m2 (approx.)



**46 Vancleve Crescent Gisborne VIC**

5 🛏 2 🚿 3 🚗

Discover the tranquillity of 46 Vancleve Crescent, Gisborne, an immaculately presented home with separate studio on a private, leafy 2,000m (approx.) allotment. Quality shines throughout and is evident from the moment you pass through the striking entry gates.

To the front of the home, you will find the stylish and spacious main bedroom suite; featuring an expansive WIR and luxurious ensuite with an extra large shower, floor-to-ceiling tiles, double vanity, and a bath.

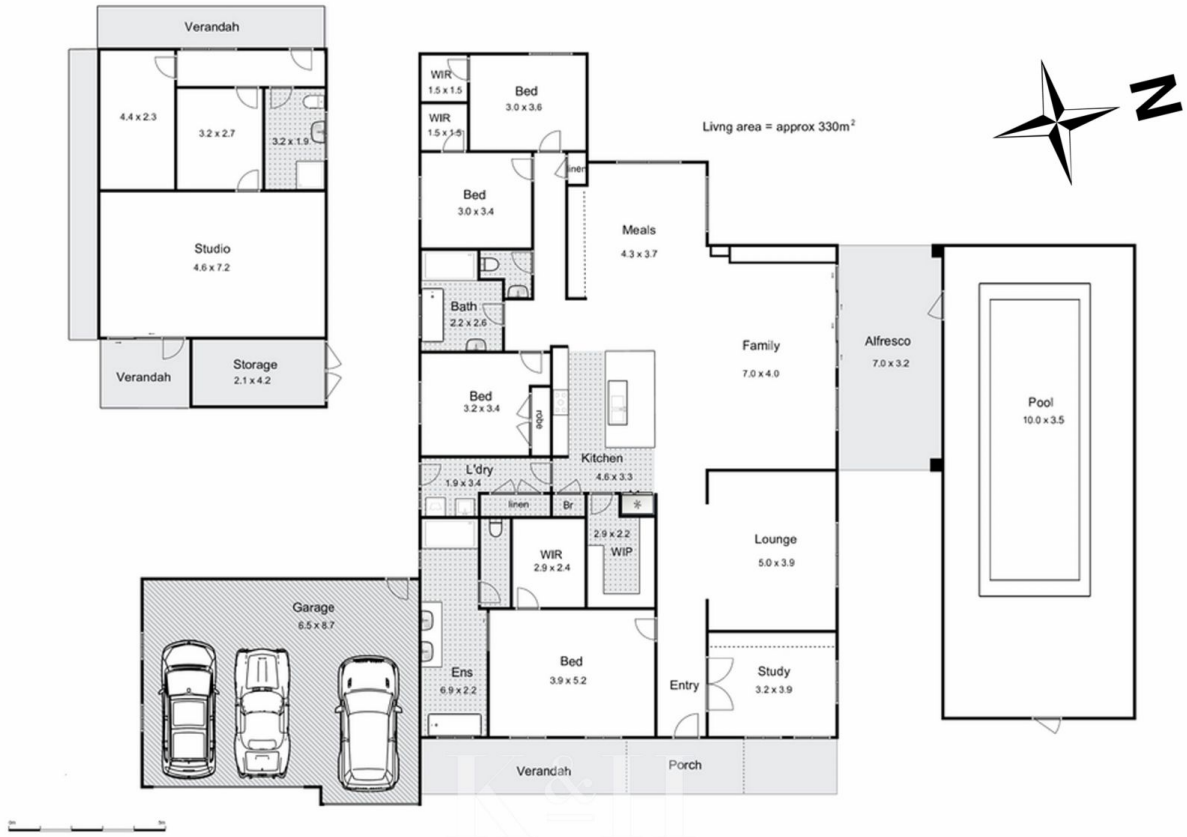
The adjacent study has double doors for privacy and inbuilt cabinetry, making it an ideal space for those looking to work from home.

**Type** : House  
**Price** : \$ 1,600,000  
**Land Size** : 2000 sqm  
**View** : <https://www.kennedyandhunt.com.au/sale/vic/macedon-ranges/gisborne/residential/house/8162392>



**Jason Kennedy**  
03 5428 2544

[For full version visit the website](https://www.kennedyandhunt.com.au)



## 46 Vancleve Crescent, Gisborne

Whilst every attempt has been made to ensure the accuracy of the floor plan contained here, measurements of doors, windows, rooms and any other items are approximate and no responsibility is taken for any error, omission, or mis-statement. This plan is for illustrative purposes only and should be used as such by any prospective purchaser. The services, systems and appliances shown have not been tested and no guarantee as to their operability or efficiency can be given.