



28 Vancleve Crescent Gisborne VIC

4 2 3

This beautifully designed family home blends space, style, and functionality. Built to an exceptional standard, every detail has been thoughtfully considered to create a residence that's as elegant as it is practical.

At the front of the home, the private parents' retreat features a spacious master bedroom suite with a walk-in robe and a premium ensuite.

Complete with a freestanding bath, double vanity, double shower, floor-to-ceiling tiles, plantation shutters, and a separate toilet, it's a sanctuary designed for relaxation.

A versatile sitting room or home office is also positioned at

[For full version visit the website](https://www.kennedyandhunt.com.au)

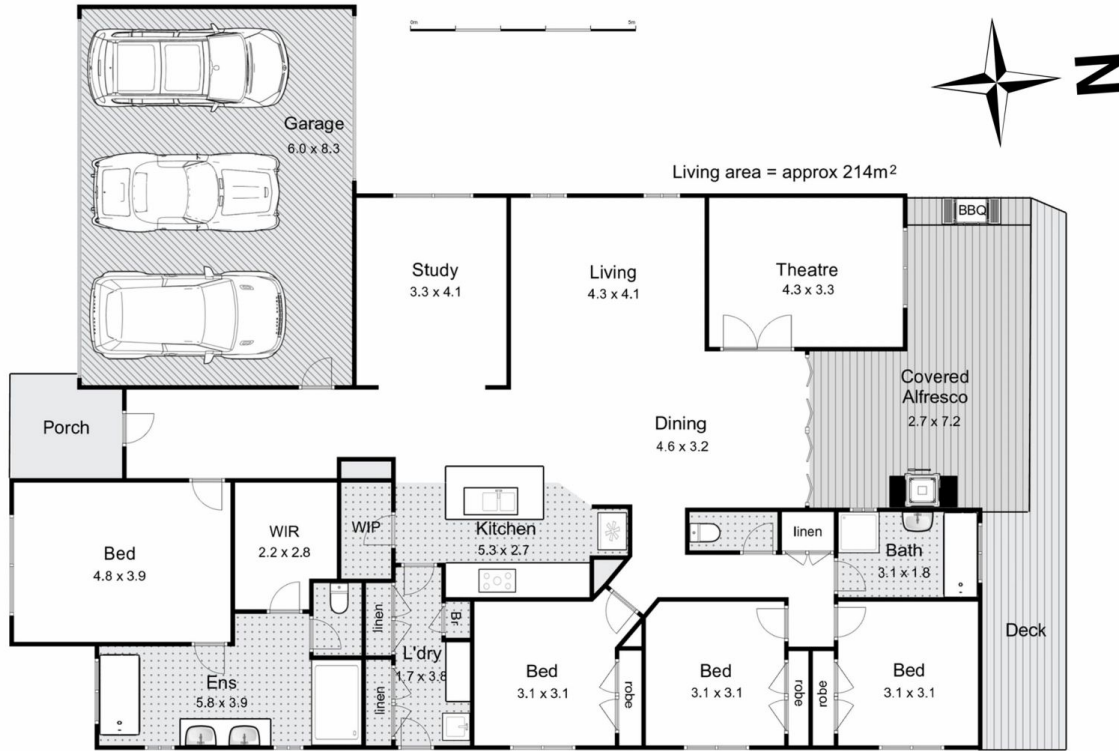
Type : House
Price : \$ 1,220,000
Land Size : 727 sqm
View : <https://www.kennedyandhunt.com.au/sale/vic/macedon-ranges/gisborne/residential/house/8509351>



Kallin Trotman
0490 754 711



Jason Kennedy
03 5428 2544



28 Vancleve Crescent, Gisborne

Whilst every attempt has been made to ensure the accuracy of the floor plan contained here, measurements of doors, windows, rooms and any other items are approximate and no responsibility is taken for any error, omission, or mis-statement. This plan is for illustrative purposes only and should be used as such by any prospective purchaser. The services, systems and appliances shown have not been tested and no guarantee as to their operability or efficiency can be given.