



33 Wallaby Run Gisborne VIC

4 2 2

Immaculate in presentation and generous in scale, this quality Simonds Home delivers a considered family environment within the tightly held Wallaby Run Estate. Enjoying an elevated township setting, the home offers immediate lifestyle appeal, moments from shops, schools, parklands, cafés, and Calder Freeway access.

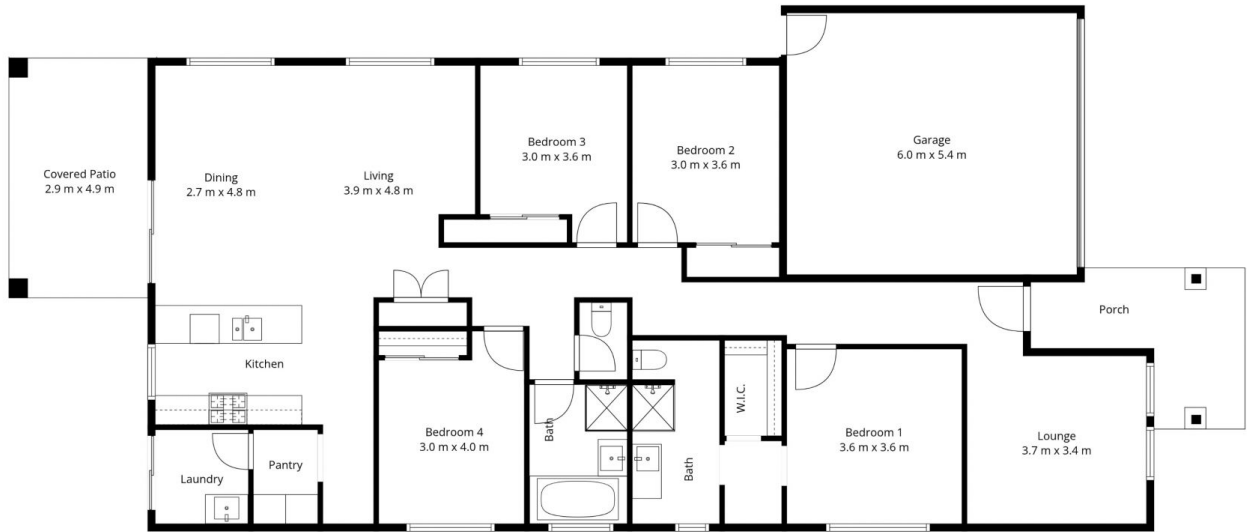
Wide Oak-toned flooring graces the single-level layout, guiding movement through two distinct living zones. A carpeted front lounge offers a quiet retreat, before opening to a light-filled living and dining domain where proportions and flow are carefully resolved. The kitchen is sleek and highly functional, appointed with Caesarstone arris-edge surfaces, crisp white cabinetry, and a walk-in pantry, complemented by stainless steel appliances including a

Type : House
Price : \$880,000 - \$900,000
Land Size : 600 sqm
View : <https://www.kennedyandhunt.com.au/sale/vic/macedon-ranges/gisborne/residential/house/8659451>



Kallin Trotman
0490 754 711

[For full version visit the website](https://www.kennedyandhunt.com.au)



This floor plan and site plan is not to scale; measurements are indicative and in metres, all information in this document has been provided by a third parties, this document should not be relied upon and all interested parties should conduct their own due diligence and rely on their own inquiries.

Produced by JPEG STUDIO