



22 Childe Harold Road Gisborne VIC

4 🛏 2 🚿 2 🚗

A luxurious family offering of exceptional calibre, this quality Simonds Homes build delivers refined living and superb entertaining credentials across a beautifully composed 836m2 (approx.) allotment. Landscaped with precision, the lawned frontage punctuated by Buxus and a weeping cherry introduces a captivating home defined by its gabled roofline and elegant entry portico.

Type : House
Price : \$1,100,000 - \$1,200,000
Land Size : 836 sqm
View : <https://www.kennedyandhunt.com.au/sale/vic/macedon-ranges/gisborne/residential/house/8703575>

Inside, a carefully considered vision unfolds, guided by strong architectural lines and enriched by reclaimed timber accents that lend warmth and texture. Living spaces are thoughtfully zoned, with a lounge anchored by a gas log heater set within a stacked stone feature mantle, while the meals area is elevated by soaring 3.25m ceilings and a magnificent clerestory window that draws in natural light.

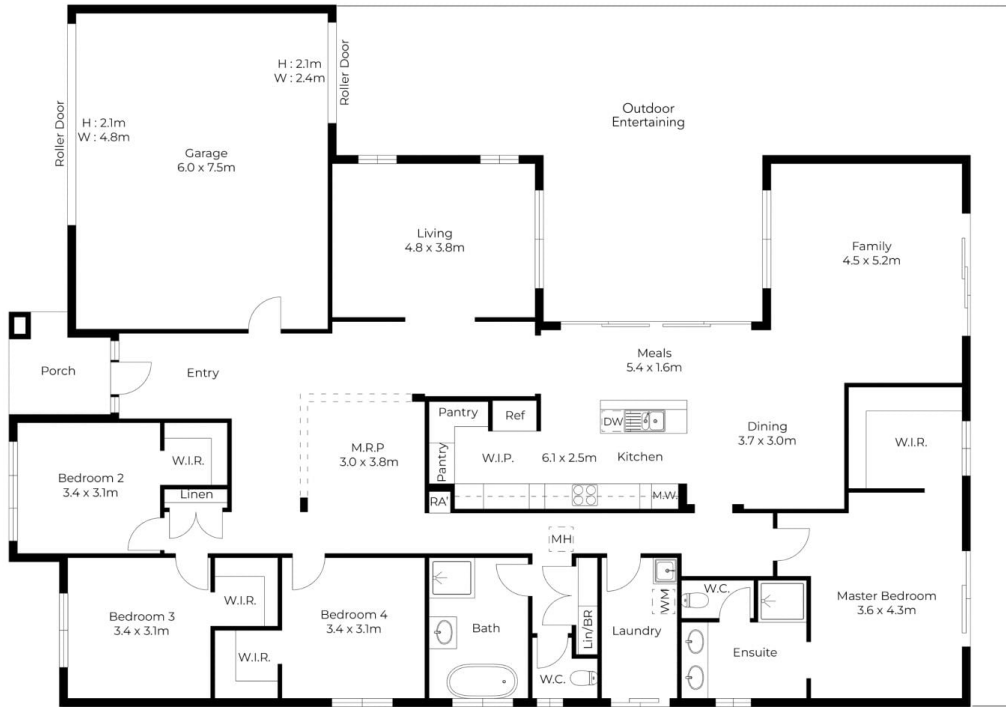
[For full version visit the website](https://www.kennedyandhunt.com.au)



Kallin Trotman
0490 754 711



Jason Kennedy
03 5428 2544



This floor plan and site plan is not to scale; measurements are indicative and in metres, all information in this document has been provided by a third parties, this document should not be relied upon and all interested parties should conduct their own due diligence and rely on their own inquires.

Produced by JPEG STUDIO